

GRANGE ACTIVITIES  
AND  
COMMUNITY SERVICE  
REPORT 2018

SPENCER CREEK  
GRANGE #855  
Eugene, Oregon  
Lane County





## INTRODUCTION:

---

# *The History of* *SPENCER CREEK GRANGE*



## HISTORY OF SPENCER CREEK GRANGE #855

Chartered in 1936

The first meeting of the Spencer Creek Grange, #855, was held as an organizing meeting on June 5, 1936.

Election of officers was held: William Schnorenberg, Master; Martin Tengs, Lecture; Harold Svarverud, Assistant Steward; Mrs. William Schnorenberg, Lady Assistant Steward; Henry Schnorenberg, Treasurer; Dorothy Schnorenberg, Secretary; Mrs. C.L. Redemer, Gatekeeper; Mrs. Nina McBeth, Ceres; Mrs. Rachael Schnorenberg, Pomona; Mrs. C.H. Svarverud, Flora; Executive Committee, W.H. McBeth, Melvin Svarverud, and Clarence Svarverud. Musician was Mrs. Ross Defoe.

Five of the charter members remained in good standing for at least the first 25 years.

Six of the original twenty-seven charter members have had continuous membership.

Meetings were held in the original Twin Oaks School. The elected officers were installed by Pomona Master Elmo Chase and assisted by Allen Wheeler and the Willakenzie degree team.

By March 4, 1937, land was donated to build the Grange Hall on and a Hall Fund called "A Sinking Fund" was started. By 1942, the building was built and wired for electricity. In 1943, a Light Plant was installed.

The first checking account was opened with \$46.29. The first Fair Eats Booth netted \$81.56 and the Grange display netted \$60.00.

The Grange supported Rural Electrification and led a drive in the development of better roads in the community.

The first ten years were struggling years for the Grange, but out of the many united efforts emerged the results of Rural Electricity, Highway Improvements, and Rural Telephone System.

## More Recent History....

In the year 2000, Life Membership Certificates were bought by Malcolm and Cookie Trupp for their parents: Harry Stayner, Pat Stayner, Daniel Trupp, and Helen Trupp.

In 2000-2001, we entered the Honor Grange Program and won a Silver Place Award. This increased interest in our activities and encouraged us to be more aware of the changing roll the Grange is playing in our present community. The Grange continued to have a water problem. We use a water wagon to haul water from town to hook up to the Grange water system. The members discuss drilling another well of which we already have two that did not bring us very good water. In the meantime, the membership plans to add another holding tank so the Grange can accommodate larger functions.

Quarterly potlucks are scheduled which are open to all members, their family members, and members of the community.

Many community charitable organizations benefit from the Grange fund raising efforts. Samaritans purse, School Bell Project, Toddlers quilts for the Lane County Sheriffs' Office and Children's Services, Lap robes for the elderly, and caps & sweaters for infants.

The Grange donated money for scholarships, breast cancer, and many other causes. Many of the Grange members donate hours of labor to other non-profit organizations.

During the years 2002-2003, the county made improvements at the intersection of McBeth Road and Lorane Hi-way. The county bought land from the Grange which decreased the parking area and changed the entrance to the area from the hi-way. A property line adjustment with the neighboring property owners was then recorded in Lane County. This property line adjustment then compensated the Grange for the loss of parking area.

Plans are being formed to improve the entrance into the building using part of the money the county paid to compensate the Grange for the property change of entrance.



These years also brought about a big change in membership. With the bankruptcy of Grange Mutual, our membership decreased by about a third. Due to the uncertainty of when the improvements will be completed, the use of the building was limited.

The Grange memberships' goal for the future is to make the facility more attractive and to be a better neighbor to our community.

In 2003-2004, we increased our membership to 45 and our dues were \$35. The membership had one of the existing wells re-opened. We purchased and installed a new filtering system, which purified our water and improved its' taste. Work began on a new ramp to improve access to our front door. The old ramp was torn out and excavation work was done by our men. Forms were built so the footings could be poured.

The Grange meetings became more open and informal. They were more inviting for visitors to attend and as a result, visitors wanted to join.

During this period of time, the members time and energy were focused on improving the building and increasing membership.

2005-As a result of attending several of our events, the membership started to grow. The members wanted continued to make the meetings more "user friendly" and open to visitors. By focusing on embracing the community and including non- members created a new image for the Grange.

The building committee worked hard this year on our access ramp project.

Working around members' vacations and personal commitments, they were able to get the framing complete and next year hopes to finish it.

The Grange celebrated two of our oldest members' membership this year.

Gertrude Albro has been a member since 1937 and is 87 years old, and Viola Kirkpatrick turned 92 this year and is our oldest member.

In 2006, the membership targeted existing projects that needed to be completed. Labor and materials were donated to finish the access ramp, and more work was done on the roof. With the new access ramp in place, the Grange building was opened to new community events.

An email list was created this year for our membership to keep them informed of coming events and quick communication. This was a positive change in communication from using a phone tree.



In 2007, Spencer Creek Grange hosted the Lane Pomona meeting which gave our members an opportunity to meet members of other Granges and to also take the 5<sup>th</sup> degree.

This year brought new enthusiasm and excitement in growing our Grange membership. Along with new members came new ideas for fund raising events. The Very Berry Pancake breakfast was added along with monthly family film nights.

This year was also a year of activity and change: Dues changed from \$35 to \$45, the membership grew to 60 members, and two members were active on the State and National level.

In 2008, the members held a Community History night. The event was a great opportunity for many of the new members to the Grange and Community to listen to the "Old Timers" such as Gertrude Albro, Helen Trupp, and Olive Whittington. Talk about the Spencer Creek area and how things have changed through the years. Members Malcolm Trupp and Cookie Stayner-Trupp, who grew up in the community and in the Grange, also spoke about the Community. How the Community has changed from when they were young, about Spencer Creek, the schools and the events that drew the Community together.

Fund raisers such as Community Yard Sale, Chicken BBQ, along with the Berry Pancake Breakfast, continued to increase the presence of the Grange in the Community and to fund our Community Service Projects.

In 2009, work continued to improve and upgrade the water system and purifier. The most recent test results showed that the water is pure enough to pass tests needed to have the Grange kitchen certified. A goal set by the membership to achieve this year was to make events "trash free". The members strived to use less paper products and to recycle those items that can be recycled.

Gertrude Albro, longtime member of Spencer Creek Grange, passed away.

Gertrude had taken part in the Community History Night presented in 2008. She had served for many years as Junior Matron and was the Grange Pianist.

Gertrude was a Golden Sheaf Member.

Viola Kirkpatrick, also a long time member in her 90's, passed away this year.

Viola has been an active Member holding many different offices and was also a Golden Sheaf Member.

At the end of the year, Spencer Creek Grange had 61 members on their membership roll. 6 members were gained and 2 were lost through death.



In 2010, Spencer Creek Grange developed a web page. SPG member Glenn Harden developed the web site and continued to be the Web Master. This form of communication gave the Grange more visibility and will be used to advertise events. Cookie Trupp added the SPG Facebook page.

A big project slated for this year was to improve the downstairs by painting the ceiling, cabinets, and walls. The concrete floor presented a bigger so needed a lot of research.

Spencer Creek Grange members filled out and submitted the Honor Grange application and received the Gold Level Award.

Added this year was the Spencer Creek Backyard Growers Market, A Harvest Festival, and a Holiday Bazaar.

At the end of the year, the members numbered 68, and the dues were increased to \$65. The dues increase was a result of the National Grange membership dues increase to \$40. The membership voted the extra dues increase after reviewing the Grange finances and expressing that membership in Spencer Creek Grange was worth the money.

In 2011, interest in SPG continued to grow, attendance at the Barn Dances continued to be high and the first year of the Growers Market was very successful. The improvements inside the building continued: new coating on the downstairs concrete floor, new window treatments on windows both upstairs and down, new counter on the kitchen serving island, and a new display cabinet built for the main hall.

The members held an open house celebrating receiving their charter 75 years ago. Service awards were presented to members a slide show presented an over view of the Grange's past history, and SPG received the Honor Grange Silver Award.

By the end of the year, two new events had been added: the Pancake Pedal breakfast and a Lecturer's series of potlucks and programs open to the community.

In 2012, Most of the Grange sponsored activities were ongoing which helped to generate interest in becoming a member of our community focused Organization. Spencer Creek Grange member Helen Trupp, who took part in the Community History event in 2008, passed away this year at the age of 91. Helen had been a member for 68 years.



The ongoing improvements in the Grange Kitchen and the addition of two new refrigerators were key elements to achieving a Certification Certificate for the Grange kitchen.

In 2013, the membership was 62 and the yearly dues remained \$65.00. Some members were lost by death and moving away. 6 new members were gained this year.

The [www.spencercreekgrange.org](http://www.spencercreekgrange.org) web site grew in popularity and was a big help in increasing the rental use of the Grange building. Regular upkeep of the building and organizing closets and drawers became the focus this year.

In 2014, many of the Grange sponsored events continued. The Grange remained a gathering hub for the community during the Summer Back yard Growers Market month.

This year, one member was recognized for 55 years of service and two 50 year members were recognized.

Repairs on the front porch roof were implemented and plans were laid out for next year, to cover the ramp which had been built to access the front door.

In 2015, the roof covering the front porch and ramp was built and completed. This made the Grange wheel chair accessible.

The Barn Dances continued under a new chairman, using a new collar and different bands. They continued to draw large crowds.

With in-crease use of the building, a water meter was installed to measure the amount of water used for special events.

Four major fund raisers continued to grow: the Very Berry Pancake Breakfast, the Halloween Haunted House, the Chicken BBQ, and the Holiday Bazaar. The Growers Market continued for the 5<sup>th</sup> year and the Harvest Festival was well attended.

The members experienced the passing of Olive Whittington, a longtime member.

2016 was a year of accomplishments....we gained 11 members through a membership drive. The Grange applied for and was given a Marching Grant through the Oregon State Grange which will help fund the replacing of the exterior of the building. Spencer Creek Grange received the Honor Grange Award, a program sponsored by the Oregon State Grange. We also received the

Distinguished Subordinate Grange Award, a program sponsored by the National Grange.

Malcolm Trupp and Cookie Trupp both retired from their positions as Oregon State Grange officers.

We resumed the popular Barn Dances, held multiple Open Houses, and ended the year with a total of 66 members.

In 2017, we continued with plans to improve the outside of the building using the \$5,000.00 grant we received in 2016. The first phase was to replace the existing main floor windows with custom made identical double pain windows. Mike Gaber was re-elected to another term as SPG Master and Cookie Trupp continued to serve on the OSG Program Development Team. We broadened our Community Service by donating to the local Autism organization and sponsoring a Veteran to visit Washington DC through the Honor Flight Program. Celebrated the 150<sup>th</sup> Birthday of the Grange.

2018 was another busy year for our Grange. We welcomed 9 new members including 1 Junior Member, New windows were installed on the main floor, began hosting monthly 4-H “Cloverbuds” meeting, hosted a Candidates Forum, Malcolm Trupp was named Oregon State Grange Volunteer of the Year, Cookie Trupp was elected OSG Lecturer, and 6 diseased trees were removed from the parking area. The proceeds from our fundraisers supported 14 Organizations and Causes throughout Lane County and the State.



**Section One:**  
**SUBORDINATE GRANGE**  
**PROJECTS**

1. Master's letter to the membership
2. Spencer Creek Grange Events Calendar
3. SPC Grange Officers for 2016-18
4. Standing Committees
5. Social Media
6. Diseased Tree Removal
7. Improvements per Insurance Recommendation
8. OSG Matching Grant



*American Values.  
Hometown Roots.*

## SPENCER CREEK GRANGE NO 855

P. O. BOX 25425  
EUGENE, OREGON 97402  
PHONE: 541-485-8162  
[www.spencercreekgrange.org](http://www.spencercreekgrange.org)

January 15, 2018

Dear Grangers,

As we close the books on 2017 and begin the new year, I wish to thank you, the members of the Spencer Grange for another wonderful year and for the opportunity to serve you as your Master for the past year. Here are just some of the many noteworthy accomplishments and events during the past year:

- National Grange celebrated its 150<sup>th</sup> birthday!!
- Continuation of the popular Barn Dances.
- 8<sup>th</sup> year of continued support of the Spencer Creek Community Growers Market.
- Grange Volunteers help Good Shepard Church Remove a Dangerous Tree.
- Spencer Creek Members Participated in State Rosebud Drill Team at State Convention.
- Granger Recognized for Veterans Award for 12 years by Meals on Wheels Program.
- Received First Place Award for GWA Display at Lane County Fair.
- Proceeds from our fund raisers have supported:
  - Veterans in Lane County
  - Autism - KindTree Productions
  - Kidsports
  - PCK – Positive Community Kitchen
  - Oregon State Grange Junior's Program
  - Oregon State Grange Doily Contest
  - Lane County "Best of Show"
  - Dogs for the Deaf
  - Soroptimist PinkSox Run Walk Cancer Awareness
  - Sheldon High School Choral Group
  - Churchill High School Choral Group
  - Sponsorship of a Veteran for "Honor-Flight" to D.C.
  - Gifts for Senior Adults



Enclosed you will find the Spencer Creek Grange annual dues notice. As you may already know, the largest portion of your \$65.00 annual payment is not kept by your local (subordinate) Grange, but passed along to the Oregon State and National Grange. Spencer Creek Grange retains only \$20.00 of your annual dues for supporting the activities and functions of the Grange as well as operation and maintenance of the building and grounds. Your dues are distributed as follows: \$20 kept by the Subordinate Grange, \$1.90 to subsidize Oregon State Grange Bulletin; \$1.50 to the Oregon State Grange Convention Fund; one dollar (\$1.00) to the National Grange Convention Fund, \$14.00 to National Grange; \$0.40 to Pomona Grange; \$25.20 to the Oregon State Grange, and \$1.00 to the Oregon State Grange emergency fund. Additional income for the Grange is derived from the many fund-raising activities throughout the year such as: the Very Berry Pancake Breakfast in August, the Chicken BBQ in September, the Spencer Creek Community Growers Market from June to October and the Haunted House in October and the Holiday Bazaar in November. These fund raisers have done very well, and we thank our members and the community for their continued support. Other financial support is received by participating in the activities of the Lane Pomona Grange Fraternal Society program of work.

In addition to our fund-raising activities, Spencer Creek Grange participates in community service activities by sponsoring the roadside clean-up of a two-mile section on Lorane Hwy. on both sides of the Grange. Last year we again had several volunteers from the community helping and it was a successful effort. This year it is scheduled for May 19<sup>th</sup> at 10: am. As always, you are invited to join us.

At our Christmas Program and open house this year we had a packed hall, with more than 100 attendees. We celebrated the Grange's 150<sup>th</sup> birthday and all in attendance joined in an energetic singing of "Happy Birthday" to the Grange! We were thrilled to once again feature the choral groups from Sheldon and Churchill High Schools. The audience thoroughly enjoyed their singing and it is always a wonderful way to kick-off the holiday season.

Our 2018 Calendar of Events will be available at our January 16th and subsequent meetings. Remember to check our web site for updates and additions to these events and dates.  
[www.spencercreekgrange.org](http://www.spencercreekgrange.org)

2018 will mark the 9<sup>th</sup> year for the Spencer Creek Community Growers Market whose sellers are largely backyard growers and hobby farmers offering locally grown fresh fruits, vegetables, eggs, nursery plants, plant starts and much more. The market also includes many crafters and food artisans. The market is open for your patronage Saturdays beginning March 26th through

the end of September 10am to 2pm. The dates will be posted on our website along with the Harvest Festival Celebration date. Please join us in welcoming the Market's newly elected President and fellow Granger, Glen Harden.

I have enclosed for your ready reference a sheet with most of our scheduled events for the year. Pin to your fridge or other handy spot. Our monthly business meetings are the **Third Tuesday** of each month at **7:00 p.m.** The meeting usually lasts for approximately 1-1/2 to 2 hours with refreshments after the meeting. We appreciate your membership in the Grange and your continued support of our many functions and activities. Your friends and neighbors have joined the Grange because they enjoy the fellowship and community involvement.

Each quarter as mentioned above we hold a community potluck and program. This is in conjunction with the Chezem Road Neighborhood Watch.

If you have any questions, please give me a call or shoot me an e-mail at: MikeGaber@gmail.com. Mike Gaber 541-683-5682 (home) 541-517-4982 (cell) or you can call the Grange and leave a message on the recorder. I am looking forward to seeing you at a Grange function in 2018 and again, thank you for your continued support.

Fraternally,  
Spencer Creek Grange

A handwritten signature in black ink that reads "Michael Gaber". The signature is written in a cursive, flowing style.

Michael Gaber  
Master/President



# SPENCER CREEK GRANGE 2018

## EVENTS CALENDAR

CHECK THE WEBSITE FOR UPDATES: [www.spencercreekgrange.org](http://www.spencercreekgrange.org)

- January: 13 10am Host POMONA GRANGE  
16 7pm MONTHLY BUSINESS MEETING  
23 6:30pm POTLUCK and OPEN HOUSE
- February: 20 7pm MONTHLY BUSINESS MEETING
- March: 20 7pm MONTHLY BUSINESS MEETING
- April: 17 7pm MONTHLY BUSINESS MEETING  
24 6:30pm POTLUCK and OPEN HOUSE  
Tba BARN DANCE
- May: 19 10am ROAD CLEAN-UP  
15 7pm MONTHLY BUSINESS MEETING  
26 10am-2pm 1st GROWER'S MARKET every Sat thru Sept 29th
- June: 19 7pm MONTHLY BUSINESS MEETING  
22-28 145<sup>th</sup> OREGON STATE GRANGE CONVENTION  
Astoria, OR
- July: 17 7pm MONTHLY BUSINESS MEETING  
18-22 LANE COUNTY FAIR COME VISIT US!!  
24 6:30pm POTLUCK & OPEN-HOUSE
- August: 18 3pm HALL CLEAN-UP  
19 9am VERRY BERRY PANCAKE BREAKFAST  
21 7pm MONTHLY BUSINESS MEETING  
24 OREGON STATE FAIR (ends Sept 3rd)
- September: 16 12pm-4pm 34th ANNUAL CHICKEN BBQ  
18 7pm MONTHLY BUSINESS MEETING
- October: 6 10am-3pm HARVEST FESTIVAL  
16 7pm MONTHLY BUSINESS MEETING  
26-27 7pm-10pm HAUNTED HOUSE
- November: 3 9am-3pm HOLIDAY BAZAAR  
13-17 152nd NATIONAL GRANGE CONVENTION  
20 7pm MONTHLY BUSINESS MEETING
- December: 2 2pm DRESS CHRISTMAS TREE & "GIFT" EXCHANGE  
3 7pm CHRISTMAS PROGRAM & OPEN HOUSE  
18 7pm MONTHLY BUSINESS MEETING

# SPENCER CREEK GRANGE #855

## 2017 ACTIVITY CALENDAR

**Address: 86013 Lorane Highway Eugene, Oregon 97405**

**Mailing: PO Box 25425 Eugene, Oregon 97402**

**Phone: 541-485-8162 [www.spencercreekgrange.org](http://www.spencercreekgrange.org)**

**Regular Business Meetings: 3rd Tuesday of the Month - 7:00PM**

### OFFICERS:

Master:	Mike Gaber	mikegaber@gmail.com	541 683-5682
Overseer:	Malcolm Trupp	malcolmandcookie@aol.com	541 686-0583
Lecturer:	Jamie Gaber	jamiegaber@gmail.com	541 683-5682
Chaplain:	Suzane Whittington	suzane70@yahoo.com	541 729-8944
Secretary:	Jeanne Taylor	jeanneltaylor@q.com	541 344-5944
Treasurer:	Jan Messenger	janmessenger21@gmail.com	541 343-6970
Steward:	Steve Taylor	sgtaylor@q.com	541 344-5944
Assistant Steward:	Doug Trupp		541 686-0583
Lady Assistant Steward	Cookie Trupp	truppcookie@aol.com	541 686-0583
Gatekeeper:	Charlie Messenger	cjrancho@gmail.com	541 343-6970
Ceres:	Stephanie Schiffgens	sschiffgens@gmail.com	541 844-1110
Pomona:	Patti Lundeen	pavhl@msn.com	541 517-6189
Flora:	Genie Harden	genieharden@gmail.com	541 341-1709
Executive Committee			
#1: Harold Whittington		harold_whittington@yahoo.com	541 255-0393
#2: Glenn Harden		gpharden@gmail.com	541 221-7416
#3: Neil Lundeen		highlakes89@gmail.com	541 554-5214

Visit our award winning web site at: [www.spencercreekgrange.org](http://www.spencercreekgrange.org)



# Spencer Creek Grange No. 855

## Standing Committee Appointments 2017-2018

<b>Agriculture:</b>	Steve Taylor	(See Grange Officer Information for Steward)
<b>Building and Grounds:</b>	Mike Gaber Neal Lundeen	(See Grange Officer Information for Master) (See Grange Officer Information Executive Committee #3)
<b>Community Service:</b>	Cookie Trupp	(See Grange Officer Information for Lady Assistant Steward)
<b>Deaf Awareness/ Family Health:</b>	Charlie Messenger	(See Grange Officer Information for Gatekeeper)
<b>Education:</b>		
<b>Energy:</b>	Malcolm Trupp	(See Grange Officer Information for Overseer)
<b>Finance:</b>	Cookie Trupp	(See Grange Officer Information for Lady Assistant Steward)
<b>G.W.A.:</b>	Suzane Whittington	(See Grange Officer Information for Chaplain)
<b>Junior:</b>	Stephanie Schiffgens	(See Grange Officer Information for Ceres)
<b>Legislative:</b>	Jeanne Taylor	(See Grange Officer Information for Secretary)
<b>Membership:</b>	Jamie Gaber	(See Grange Officer Information for Lecturer)
<b>Rental Contact:</b>	Malcolm Trupp	(See Grange Officer Information for Overseer)
<b>Veterans:</b>	Harold Whittington	(See Grange Officer Information for Executive Committee #1)
<b>Youth:</b>	Stephanie Schiffgens	(See Grange Officer Information for Ceres)

## SOCIAL MEDIA

[www.spencercreekgrange.org](http://www.spencercreekgrange.org)

The members of Spencer Creek Grange are very proud of our “award winning” Community Grange

web site. Member Glenn Harden is our web master. Glenn developed our site and has managed it several years.

With the increased activity at our Grange and in the Community and also the increased interest about the Grange and membership, our web site has been a great addition to the other public Medias we use to reach the public. Visitors to our website find information about our Grange which includes map showing our location. They also have access to our up to date information about Grange events and event calendar, links to events happening in the community, and a link to the Oregon State Grange.

Our web site is interesting and the information is kept current. One of the great advantages we have with our web site is that our members in other states can be kept informed and up to date on their home Grange.

We have a Face Book page-Spencer Creek Grange-and use email to send out our meeting notices and other communication between meetings. All but a few of our members receive electronic communications and we print and deliver to those few who don't.



# What is the Grange?

The Grange is a grassroots, non-partisan, non-sectarian, fraternal organization with its roots in agriculture. Although the Grange was originally an organization of farmers, it has evolved to include people from all walks of life who have a common goal to make our world a better place to live.

The members of the Spencer Creek Grange are your neighbors, and include families who have lived here for generations as well as newcomers to the area. A shared love of agriculture, the natural world, and rural society unites us. Attend one of our events or join us at one of our monthly meetings... a friendly welcome awaits you!

## Meetings

Meetings are held at 7:00 p.m. on the third Tuesday of each month. You're also invited to attend one of our Community Potlucks, an informal gathering during which you'll have an opportunity to eat scrumptious food, hear informative presentations by guest speakers and catch up with what's new in your community. The potlucks take place once every three months and begin at 6:00 p.m.



Established June 11th, 1936

## Activities and Events

The Grange has become the venue for a growing number of fun and informative events. These include the Spencer Creek Community Growers' Market, our annual Very Berry Pancake Breakfast, our popular Barn Dance series and the spookiest Haunted House you'll ever experience.

## Contact Us

We can be reached by email or you can write to:

Spencer Creek Grange No. 855

PO Box 25425

Eugene, OR 97402

The Spencer Creek Grange Hall is located at 86013 Lorane Highway at the corner of McBeth Road in Eugene. To learn how to get to the Grange, you can use this Google Maps link.

last revised: January 28th, 2019

## Spencer Creek Grange #855

### Diseased Tree Removal and Clean-up

February 10-11, 2018

The services of ARBOREASE TREE SERVICE, Pleasant Hill, OR - Richard Hill proprietor, was engaged by the Grange to limb and fell the 6 trees (within striking distance of the building) south of the Grange hall in the parking lot. Rich began limbing the trees Friday, February 16th and finished up on Saturday. The cost for this service was \$4,000.

Grangers and neighbors assembled as a work party Sunday morning at 8:30-9:00. The weather was misting to light rainfall early on but that subsided by 10am; 37-42 degrees. The work party consisted of: Mike Gaber, Glenn Harden, Phyllis Helland, John Lyngdal, Charlie Messenger, Ray Morris, Loy Sparks, Steve Taylor, Malcolm Trupp and Joe - a neighbor from nearby Svarverud Rd. In addition to the Grange work party, Rich, his wife and son also pitched in to drag the downed limbs to Rich's trailer mounted chipper. Malcolm brought his dump truck to catch the chips in and then transport and dump at his house. Mike brought his tractor with a grapple claw to help transport the branches nearer to the chipper. John brought his chain-saw to keep up on his continuing education requirements and train his apprentice, Joe.

Once that majority of the heavy branches were chipped, it was decided to burn the rest. John, Ray and Charlie provided gas-powered blowers to keep the fires going and burning continued for at least two hours. The 3 burn piles were consolidated into one pile and left to smolder. And smolder it did, for 2 weeks....!!

The group took a break around noon to enjoy fresh-baked pizzas prepared and cheerfully served by Jamie in the kitchen of the Grange. The family-sized pizzas were happily consumed by the group along with fresh coffee and other refreshments.

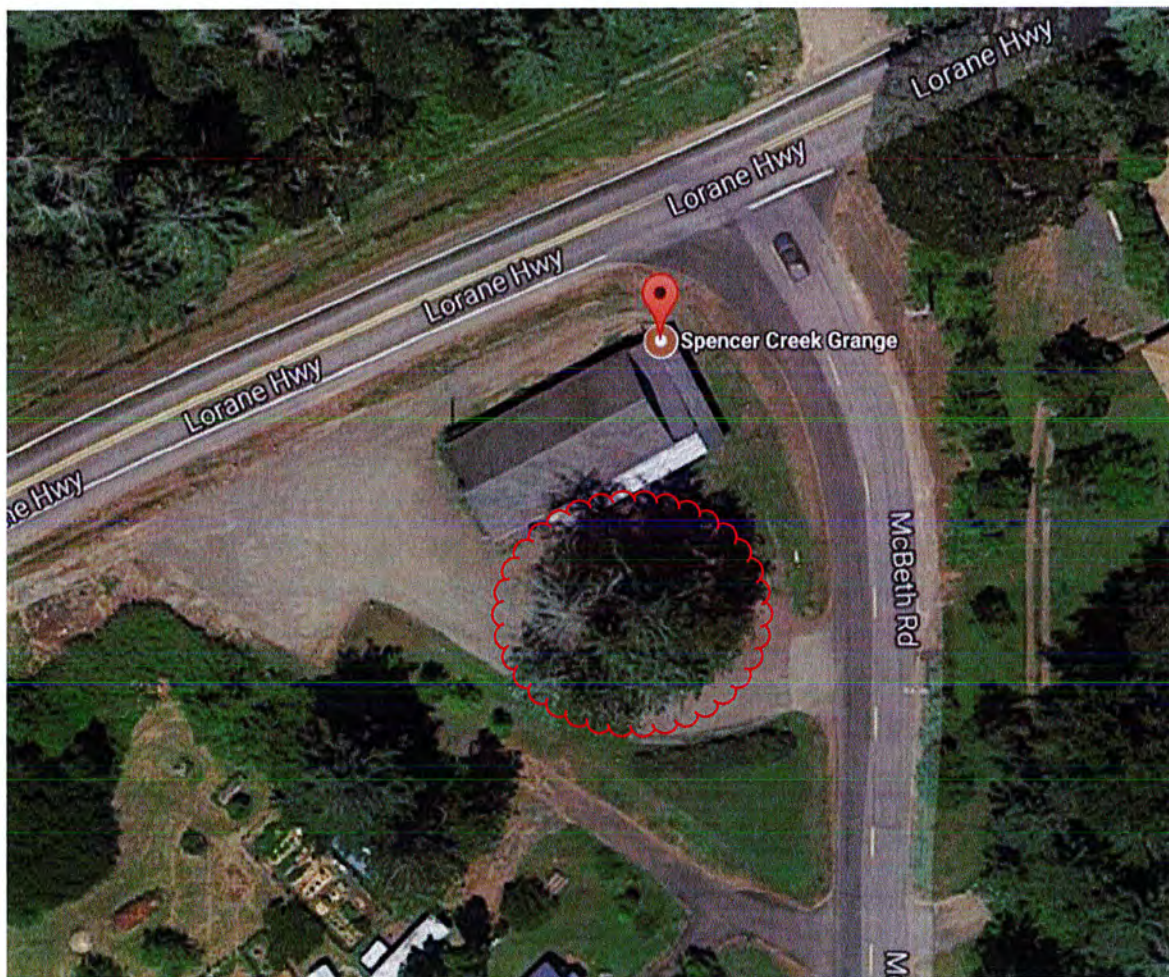
It is estimated that a total of 49 man-hours was spent on the clean-up on Sunday, with some additional hours Friday and Saturday.

Glenn Harden hauled off one of the straightest tree trunks to re-purpose into a beam for construction of his house. He was going to have the log milled to a 6x12-24' long. It is a good feeling knowing one of the trees was used for something other than firewood. There was discussion to perhaps re-purpose some of the remaining shorter logs into timber to build an outdoor stage in the future on top of or incorporating the stumps in some fashion.



The Spencer Creek Grange located at the corner of McBeth Rd. and Lorane Hwy is looking for the advice and recommendations of a licensed, bonded and insured professional certified arborist to inspect and advise on the condition of a mature grove of mixed-species trees located near the Grange Hall. Additionally, an estimate of costs for any recommended remedial actions deemed necessary to insure a safe and healthy stand of trees is desired with a proposed schedule of work and completion.

The Grange heats the Hall with firewood and desires to keep for its' use any recoverable logs and or limbs over 4"-6" in diameter. All firewood logs and limbs shall have greenery removed and stock-piled onsite in a location designated by the Grange. All other limbs, greenery and waste shall be removed from the site.















## SPENCER CREEK GRANGE NO 855

P. O. BOX 25425  
EUGENE, OREGON 97402  
PHONE: 541-485-8162  
[www.spencercreekgrange.org](http://www.spencercreekgrange.org)

December 13, 2018

Transmitted Electronically:  
[Debbie.Thomas@gr8basin.com](mailto:Debbie.Thomas@gr8basin.com)

Great Basin Insurance  
460 E. Second Ave.  
Eugene, OR 97401

Attn: Debbie

Subject: LOSS CONTROL RECOMMENDATION LETTER Dtd 9/12/2018

Debbie,

Please accept this letter and accompanying pictures as confirmation and positive representation that the items noted in the above subject letter have been corrected as requested.

1. Four new fire extinguishers have been purchased, located and properly mounted in accordance with the manufactures' instructions.
2. See #1 above.
3. Moss killer was applied to the roof in November and once the moss was killed, it was removed manually and with pressure washing. Additional moss killer will be applied seasonally as required to keep further growth accumulations at bay.
4. We are happy to report that we received notice that our grant request for matching funds in the amount of \$5,000. to not only paint the siding, but to replace it entirely with James Hardie fiber-cement lap siding was accepted. Until the new siding can be replaced in the spring, we have repainted and sealed the west end of the building it to prevent deterioration of the wood as requested.



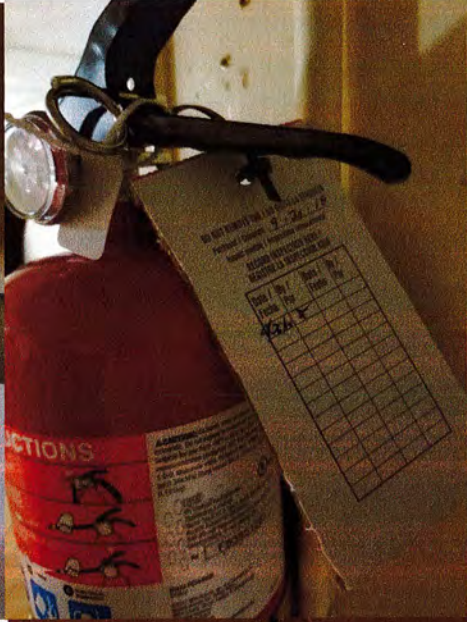
5. We have successfully calculated the building occupancy pursuant to local codes and regulations. The signage is now installed appropriately as depicted in the attached photographic record.

Please do not hesitate to contact the undersigned if you have any questions.

Sincerely,  
Spencer Creek Grange

A handwritten signature in black ink that reads "Mike Gaber". The signature is written in a cursive, flowing style.

Mike Gaber  
Master/President  
[mikegaber@gmail.com](mailto:mikegaber@gmail.com)  
attachments









Prep for paint



Painted 1/2



Painted 2/2





## OSG Matching Grant Program

In September of 2018, Spencer Creek Grange applied for, and was subsequently granted, a second \$5000.00 Grant from the Oregon State Grange Matching Grant Program.

On the following pages, you will find the request letter and:

A project schedule was also submitted which showed that the project would take place in 2019.

A match pledge form that was filled out by our members that showed the volunteer time that we would put in on this project.

This grant request was to replace building siding and trim, paint siding, and upgrade the electrical system.

Pictures that were included with request.



SPENCER CREEK GRANGE NO. 855  
P.O. BOX 25425  
EUGENE, OREGON 97402

---

September 13, 2018

Oregon State Grange Master  
Oregon State Grange  
643 Union St. NE  
Salem, OR 97301

Subject: Oregon State Grange Matching Grant Program  
Re: Spencer Creek Grange #855 Application

Worthy Master,

Enclosed please find our application for the Oregon State Grange Matching Grant Program for 2018. This is our second application and part two of our Grange beautification program. As you might recall, we were forced to delay this portion of our program previously and turn our attention (and funds) to the emergency removal of 6 very large diseased and dangerous trees just outside our hall.

The scope of our request was approved by a majority vote of the membership at our August 21, 2018 regular business meeting. Please contact me if you have any questions or require additional information regarding our grant request.

Please know that the membership at Spencer Creek Grange appreciates all the effort OSG has made to help the subordinate granges keep their buildings looking and functioning better. Thank-you in advance for your consideration.

Sincerely,  
Spencer Creek Grange #855

Mike Gaber  
Master





Oregon State Grange Matching Grant Program

Date Received: \_\_\_\_\_

Project Identification Information
<b>Grange Name:</b> Spencer Creek Grange #855
<b>Grange Address:</b> 86013 Lorane HWY, 97405
<b>Briefly describe the project in 50 words or fewer:</b>  1. Replace building siding and trim. 2. Paint Siding. 3. Upgrade electrical system.

Applicant Information	
<b>Grange Master:</b>	Mike Gaber
<b>Project Contact:</b>	Mike Gaber
<b>Mailing Address:</b>	PO Box 25425 Eugene, OR 97402
<b>Day Phone:</b>	541-344-0223
<b>Email:</b>	mikegaber@gmail.com
The signatory below declares that s/he is authorized to act on behalf of the Grange, assures that a majority vote of the membership has authorized this project, and assures that any funds received will be used only for purposes set forth herein.	
<b>Name:</b> Mike Gaber	<b>Signature:</b>
<b>Address:</b> PO Box 25425 Eugene, OR 97402	<b>Phone:</b> 541-344-0223(w) 541-517-4982 (cell)

Project Funding Request	
<b>Grant funds requested:</b>	\$ 5,000.00
<b>Value of Grange match (must be equivalent to request, at minimum):</b>	\$ 16,252.98
<b>Total project value:</b>	\$ 21,252.98

# SEE ATTACHED SHEET

## Project Narrative



*Integrity Values  
Sustainable Future*

### Oregon State Grange Matching Grant Application

#### Project Narrative

**In no more than 4 pages, using no smaller than 11 point font, please provide responses to the following questions. Grant reviewers respond best to clear, concise narrative.**

##### **Project Description and Grange Benefit**

- What do you want to do and why do you want to do it?
- Does the project meet a need that increases your standing in the neighborhood?
- How will it contribute to neighborhood identity, foster a sense of community and strengthen relationships?
- What is the lasting impact of your project on the Grange and the neighborhood?

##### **Project Readiness**

- Who will handle the project accounting? If other than applicant, please identify and provide contact information.
- Briefly discuss your project budget and schedule.
- For physical improvements, how will long-term maintenance costs be addressed?
- Identify permits, fees and insurance requirements, if applicable, and how you plan to address them.
- Discuss qualifications of those providing professional services (documentation of professional qualifications must be provided to justify professional rates)

##### **Sustainability Values**

- Describe how your Grange will benefit from the project. How does this project contribute to your neighborhood and/or community safety, and building community relationships?
- Discuss how the project contributes to community goals of environmental health and sustainability.

##### **Grange Match**

- Briefly discuss how you have met or exceeded the program's match requirement.



### Match Pledge Form

- The project budget must include an amount of cash, in-kind donations, or volunteer time equal to or greater than the grant request.
- Volunteer labor or professional services contributed before the grant is awarded cannot be counted toward the match.
- All volunteer labor is valued at \$22.14 per hour.
- Donated materials or supplies are valued at their retail price.
- The donors of professional services must also document the value of their contributions on official letterhead. Professional services are valued at their customary retail value.
- The Match Pledge Form provided must be used to document all volunteer labor and donated cash, materials or supplies. Use the form to collect pledges and then to account for the actual contribution. The last two columns are provided to verify that the pledged hours, goods or services were received.
- A project coordinator or other method of engaging volunteers may be desirable depending on the project.

Name of Grange: SPENCER CREEK GRANGE #855  
 The individuals, businesses, or organizations listed below commit to donate volunteer time, materials, services or cash for the above project.

Name/Address/Phone	Signature	Description of Donation or Volunteer Role (include # hrs. pledged)	Value of Item or Hours	Value Received or Hrs. Worked	Date & Initials
Harold Whittington 1450 Jacoby Dr. Ely 541-255-0393	Harold Whittington	10-15 HRS			
Suzanne Whittington 1450 Jacoby Dr. Ely 541-255-0393	Suzanne Whittington	4-5 hrs			
Charles Messenger 85660 Swarden Rd 541-348-6440	Charles Messenger	# as needed			
Robert Thompson 85417 Chezem Rd 541-348-6440	Robert Thompson	6 hrs + more			
Malcolm Trapp 85445 Chezem Rd	Malcolm Trapp	20 hrs + as needed			
Cookie Trapp 85495 Chezem Rd	Cookie Trapp	5 hrs +			
Jamie Taber 85101 Chezem Rd	Jamie Taber	10 hrs			
Jan Messenger 85660 Swarden Rd 541-348-6440	Jan Messenger	5 hrs +			
Steve Taylor 85458 Appletree Ct	Steve Taylor	5 hours + as needed			
Jeannette Taylor 85450 Appletree Ct	Jeannette Taylor	5 hours +			

## Match Pledge Form

- The project budget must include an amount of cash, in-kind donations, or volunteer time equal to or greater than the grant request.
- Volunteer labor or professional services contributed before the grant is awarded cannot be counted toward the match.
- All volunteer labor is valued at \$22.14 per hour.
- Donated materials or supplies are valued at their retail price.
- The donors of professional services must also document the value of their contributions on official letterhead. Professional services are valued at their customary retail value.
- The Match Pledge Form provided must be used to document all volunteer labor and donated cash, materials or supplies. Use the form to collect pledges and then to account for the actual contribution. The last two columns are provided to verify that the pledged hours, goods or services were received.
- A project coordinator or other method of engaging volunteers may be desirable depending on the project.

[illegible]



## Project Schedule

- List in chronological order specific steps you will take to carry out this project.
- Identify who will be primarily responsible for each step or activity.
- Estimate the month and year the step or activity will be completed.
- Projects should be completed within one year of the signed agreement with the Oregon State Grange.

[illegible]

### Project Budget

- Get estimates from more than one reliable source.
- All construction projects must include a 15% contingency.
- Items considered for the match (section C) must be documented.
- Column B must match the total of the three columns in C-Grange Match. Column D is to be used for additional monies not being used to match the funds of the OSG

A	B	C - Grange Match			D	E
Item Description	Grant Request	Volunteer Time (\$22.14/hr)	In-Kind Contributions (supplies, materials or services)	Cash	Other Sources (Not included w/match)	Total Project (B+C+D=E)
<b>Personnel</b>						
See below		see below				see below
<b>Subtotal</b>						
<b>Supplies &amp; Materials</b>						
Meals		32hrs = \$ 676.48		\$ 440.00		\$ 1,116.48
Conduit/wire/recepticles		24hrs = \$ 507.36		\$ 500.00		\$ 1,007.36
Siding/vapor/plywood/trim	\$5,000.00	234hr = \$4,946.76	\$7,969.05 less grant \$5,000 =	\$ 2,969.05		\$ 12,915.81
Paint & supplies		80hr = \$1,691.20		\$ 900.00		\$ 2,591.20
caulking,nails,eqpt rental				\$ 850.00		\$ 850.00
<b>Subtotal</b>	\$ 5,000.00	\$ 7,821.80		\$ 5,659.05		\$ 18,480.85
<b>Services</b>						
<b>Subtotal</b>						
<b>Other Items:</b>						
Insurance						n/a
Permits						n/a
<b>Contingency for all construction projects- 15%</b>						\$ 2,772.13
Other						
Meals (see above)						
<b>Subtotal</b>						\$ 2,772.13
<b>GRAND TOTAL</b>						\$ 21,252.98



## Attachments

Project Narrative  
Photos

# Project Narrative

## Project Description and Grange Benefit

What do you want to do and why do you want to do it?

Our membership has elected to improve the outward appearance of the hall by replacing the ancient siding, trim and flaking paint. Once some of the siding is removed, upgrades to the electrical system can be accomplished for safety purposes and to mitigate potential fire hazard situations. We can also provide for future audio/visual wiring (conduit) while we have access to the studs.

Does the project meet a need that increases your standing in the neighborhood?

Yes.

How will it contribute to neighborhood identity, foster a sense of community and strengthen relationships?

The Spencer Creek Grange has high community visibility because it is located at the junction of two very busy country arterial transportation corridors. We all know that location and first appearances' are meaningful. Once the side of the building that faces the most traffic is re-sided and painted, the building will be much more inviting to our immediate and surrounding community.

What is the lasting impact of your project on the Grange and the neighborhood?

A Grange hall that is visually appealing and offers an inviting, warm safe atmosphere will be a lasting improvement and beneficial impact in the neighborhood for many many years to come.

## Project Readiness

Who will handle the project accounting? If other than applicant, please identify and provide contact information.

Mrs. Jamie Gaber will be the project accounting contact:

Spencer Creek Grange  
Attn: Hall Improvements Accounting  
Jamie Gaber  
PO Box 25425  
Eugene, OR 97402  
541-344-0223

Briefly discuss your project budget and schedule.

Our project budget is included herein. The scope of work and cost for the repairs as well as the proper sequencing of construction activities has been designed to minimize labor costs wherever possible.

For physical improvements, how will long-term maintenance costs be addressed?

After all improvements are completed we expect much less long-term costs associated with maintenance of the siding and unsightly peeling paint.

Identify permits, fees and insurance requirements, if applicable, and how you plan to address them.

No permits will be needed for any planned construction. Our insurance carrier is aware of the planned improvements and reports that our rates could be improved by installing a non-combustible siding.

Discuss qualifications of those providing professional services (documentation of professional qualifications must be provided to justify professional rates)

Although we do have grange members who are professional craftsmen, we have not included in our grant request any professional rates.



### Sustainability Values

Describe how your Grange will benefit from the project. How does this project contribute to your neighborhood and/or community safety, and building community relationships?

We expect to contribute to the community a building that will be much more inviting to our immediate and surrounding area. Last year we installed our new thermally efficient windows and the interior environment for our community guests has been much more comfortable and relaxing throughout the year. The new windows have added the un-expected benefit of sound attenuation to the Grange. Road noise has been reduced on one side of the building, a definite plus during meetings upstairs! Our neighbors have appreciated the care and thoughtfulness that we have used in maintaining the same look to our building by purchasing modern, efficient custom-made windows to match the existing style.

Discuss how the project contributes to community goals of environmental health and sustainability.

Replacing the siding and upgrading the electrical will add energy efficiencies and safety to our Grange Hall as well as increase the overall long-term sustainability of the Hall by attracting new members to a better-looking Hall.

### Grange Match

Briefly discuss how you have met or exceeded the program's match requirement.

Cash expenditures by Spencer Creek Grange combined with member labor exceeds the \$5,000 threshold for grant match requirement.



Lap-siding in sad  
shape, missing in  
some areas





**GRANGE COMMUNITY**

**AREA PROJECTS**

1. Grange Building and Grounds Use by Others
2. Hosting Lane Pomona Grange
3. Members Serving in Lane Pomona Grange
4. Hosted Candidates Forum
5. Adopt-A-Road Program
6. Lane Pomona High Tea
7. Strawberry Shortcake Fundraiser
8. Lane County Fair
9. Community Service Outreach List
10. Donations to area Facilities
11. Very Berry Pancake Breakfast
12. Recycling Day
13. Spencer Creek Grange Barn Dances
14. 4-H Cloverbuds
15. 34th Annual Chicken BBQ
16. Community Growers Market
17. Holiday Bazaar
18. Grange Open House

STAPLES®

## Grange Building and Grounds Use by Others

The Grange building is available for use by the public as well as by our members. Our Grange has a contract that is presented to those wanting to use the building and grounds and Insurance coverage is required in most cases. Members can use the facility free of charge when using it for personal use and when not holding an event to raise money.

The Grange building is offered free of charge to most non-profit organizations such as 4-H, Neighborhood Watch, Lane Electric Co-Op information evenings, & Verizon informational meeting.

We have rented our Grange building out for a variety of events, some of which are listed below.

- ♦ Baby showers
- ♦ Birthday parties
- ♦ Dances
- ♦ Solsara workshops
- ♦ Harvest Festival
- ♦ Holiday dinners
- ♦ Spencer Creek Growers Market





# Grange Rental Information

The Spencer Creek Grange Hall is available for your one-time or ongoing events. Use of the hall and kitchen, metal folding chairs, tables, plates and silverware are included in the rental price. The Grange has plenty of parking.

Alcoholic beverages are prohibited in the Grange building or on Grange property.

Rental fees (8am to Midnight):

## General Public Use

- Commercial Use: \$250
- Non-Commercial (memorial, birthday, etc.): \$150

## Grange Member Use (member must attend event and sign agreement)

- Personal non-commercial use: \$25.00
- Non-commercial use AND Granger is a member of the group and/or meeting: \$75.00
- Commercial Granger use or sponsor thereof: \$150.00

## Historical use of the Grange

Community “Grandfathered” Grange users (Boy Scouts, 4-H, LEC) are based on historic rates and subject to membership vote.

## Long Term Lease

Long Term Lease is defined as any type of renter that commits to rent at least once a month for a minimum of 6 months. Reduced rental rates shall be considered on a case-by-case basis considering use type, classification of renter and proposed duration of event. Renter must agree that Grange events take precedence. Grange to give Renter 30 days notice of conflict if possible.

## Liability Insurance

Insurance liability limits including property damage coverage, shall be a minimum of \$500,000. Most homeowner insurance carriers will provide an ACORD Certificate of Liability Insurance in this amount for the day of your event.

## Cleaning Deposit

\$150 Refundable deposit for all renters except grange sponsored events and member (non-commercial) use of hall.

## Noise

Our rental agreement incorporates provisions of the Noise Control Ordinance, Chapter 5, Section 5.6 of the Lane County Code regarding community noise. Renters acknowledge that the Grange is situated in a residential neighborhood and agree to substantially reduce noise (generated from sources such as live or recorded music) by 10 PM.

For more information please [contact us](#).

214762

## *Join the Grange for*

### **Fellowship**

Join your neighbors for fun, family-oriented social activities: dances, picnics, fairs, camps, parades, holiday functions, and charity events.

### **Community**

Become involved with an organization that has a history of making a difference locally. Learn more about your community leaders, local issues, and work together to find solutions.

### **Leadership**

Develop leadership skills by being an officer or committee chairperson. Learn to be a leader in a supportive, mentoring environment among family and friends.

### **Service**

Contribute to your community by working together to address local problems and support charitable causes. For example, Granges support public schools by donating dictionaries to third graders and by volunteering their time to help teachers.

In Essentials ... Unity

In Non-Essentials ... Liberty

In All Things ... Charity

... The Grange Motto

For more information

*Contact us at:*

*[www.spencercreekgrange.org](http://www.spencercreekgrange.org)*

Mailing address: P.O. Box 25425  
Eugene, OR. 97402

---

Spencer Creek Community Grange  
Message phone: 541-485-8162

Physical location: 86013 Lorane Highway,  
Eugene (corner of Lorane Highway &  
McBeth Road )

---

Or contact the

**Oregon State Grange** at  
643 Union Street NE  
Salem, Oregon 97301-2462  
1-5033160106

**[www.orgrange.org](http://www.orgrange.org)**  
2018

## **SPENCER CREEK GRANGE**



## **The Grange and YOU**

**Fellowship • Community  
Leadership • Service**



Application for Grange Membership

Name \_\_\_\_\_ Address \_\_\_\_\_ City \_\_\_\_\_ State \_\_\_\_\_ Zip \_\_\_\_\_  
Phone Number \_\_\_\_\_ E-mail \_\_\_\_\_  
Occupation \_\_\_\_\_ Date of Birth \_\_\_\_\_

I hereby apply for membership in Spencer Creek Grange Grange # 855. I desire to unite with others in elevating and advancing the interests of the American family and community life, receiving in return the benefits and advantages of those who belong to the Grange. I promise a faithful compliance with the by-laws of this Grange and the constitution and by-laws of the State and National Granges. I have not previously applied for membership in this or any other Grange during the past six months.

Signature of applicant \_\_\_\_\_ Date \_\_\_\_\_  
Recommended by \_\_\_\_\_

Application Fee \$ 5.00 Annual Dues \$ 65.00 Total \$ 70.00

## What is the Grange?

- ♦ A non-profit organization whose roots are in agriculture.
- ♦ A fraternity open to all regardless of age, sex, race, religion, or political persuasion.
- ♦ An advocate for rural America that does not endorse, support, or financially assist political parties or candidates.
- ♦ A meeting place for networking, fellowship, and fun.

## Personal rewards of membership

Learn more about your food supply, gardening, and issues affecting rural life.



The Grange sponsors programs and activities for all: deaf awareness and family health, photography, and crafts.

The youth program rewards achievement, develops leadership skills, and provides scholarships and opportunities to travel.



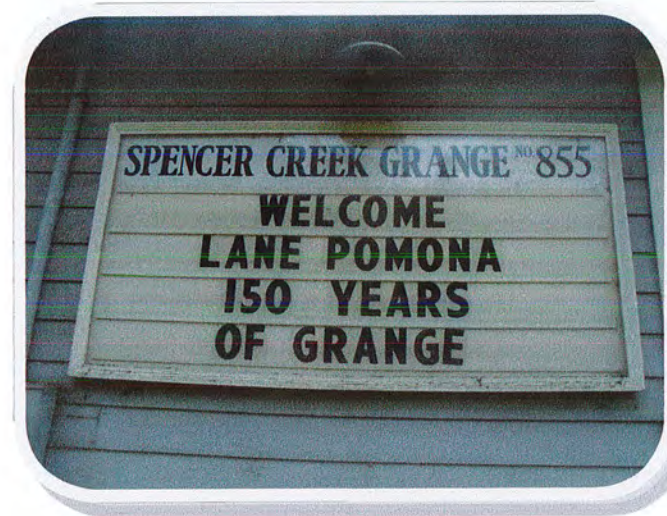
Junior Grange teaches children to conduct a meeting, and offers projects and contests that are educational and fun.



## Hosting Lane Pomona Grange

In January, we had the opportunity to host the quarterly meeting of the Lane Pomona Grange. It had been several years since we last hosted so this was a good time for our members, who do not attend Pomona regularly, to get to visit with other Grangers from through out the county.

Setting up the hall for the business meeting is part of the responsibility of hosting.



As host Grange, we provide the noon meal and a late afternoon/early evening light dinner. Our members: Jeanne Taylor, Jan & Charlie Messenger, and Mike Gaber were some of the members getting ready to help the visitors through the buffet line.



STAPLES



## Members Serving in Lane Pomona Grange



Pictured Left is Cookie Trupp, Lane Pomona Treasurer, and Malcolm Trupp, Lane Fraternal Society Sec/Treas along with the Financial review committee. The Treasurer's books are reviewed yearly by a select financial committee.



Pictured above with the rest of the Lane Pomona officers are Cookie Trupp, Lane Pomona Treasurer, and Malcolm Trupp, Lane Pomona Steward.

STAPLES



## Hosted Candidates Forum for Lane County Commissioner Position 5

**Candidates Forum for  
Lane County Commissioner Position 5**

**YOUR CHANCE TO  
MEET THE CANDIDATES**

*The Spencer Creek Grange and the League of Women Voters  
Invites you to attend a  
Candidates Forum and Reception  
For the election May 6 for Lane County Commissioner for Position 5  
Also known as East Lane*

- Heather Buch
- Kevin Matthews
- Gary Williams
- Frank King
- James Barber
- Tim Laue

*Tuesday, April 24, 7—9 pm  
Spencer Creek Grange  
(corner of Lovane Highway & McBeth Road  
www.spencercreekgrange.org)*

Light Refreshments will be served  
**The public is invited**

The Grange is a grassroots, non-partisan, non-sectarian, fraternal organization with its roots in agriculture and does not favor any candidate over the others.  
The League of Women Voters, nonpartisan political organization, encourages the informed and active participation of citizens in government.

Spencer Creek Grange presented a Candidates forum for Lane County Commissioner race for position 5 (East Lane) with the League of Women Voters of Lane County help. 6 Candidates were invited to participate in the forum which was held on Tuesday, April 24, 7-9 p.m. at the Grange.

### 2018 Spencer Creek Candidates Forum

Lane County Commissioner District 5

#### YOUR CANDIDATES ARE: (alphabetical order):

**James Barber** - Lives in Walterville. Real Estate Broker, LCC, no degree, Bus. Mgt.

**Heather Buch** - Lives SW of Eugene -Special Projects Broker, St Vincent's. BA, Seattle Univ. Business Admin.

**Tim Laue** - Lives in Blue River - Retired - BA, U of O Political Sci, History and Lit., M.Ed., U of O.

**Frank King** - Lives in Deerhorn. Speaker and Trainer, auctioneer, comedian. BS and BA, U of N. Carolina, Labor /Mgt. relations and Pol. Science.

**Kevin Matthews** - Lives in Dexter. Agricultural producer. BA, UC Santa Clara environmental studies; MA, UC Berkeley Architecture.

**Gary Williams** - Lives in Cottage Grove. Appointed Lane Co. Commissioner. Painting contractor, Mayor of CG. Attended San Jose Bible College, no degree.

(Above information was taken from the Candidate's filing submitted to Lane County.)

#### A special thanks to the following for their help with this event:

Spencer Creek Grange Forum Committee: Jeanne Taylor, Glenn Harden, Mike Gaber. Grange Helpers/Members: Jamie Gaber, Malcolm Trupp, Cookie Trupp, Steve Taylor, Jan Messinger.

League of Women Voters: Kathy Madison, Linda Lynch, and Kelli Osborn.



Spencer Creek Grange member Jeanne Taylor, welcomed the community and introduced the Candidates. The people in the audience were given programs and 3X5 cards to write their questions on and were given to the moderator..

### Questions From the audience

What issues do you think  
you all agree on? Where do  
you think you disagree?

How can the commissioners  
help get rural folks internet  
service that is both fast + reasonably  
priced. Rural folks need internet  
for their businesses + their kids  
education

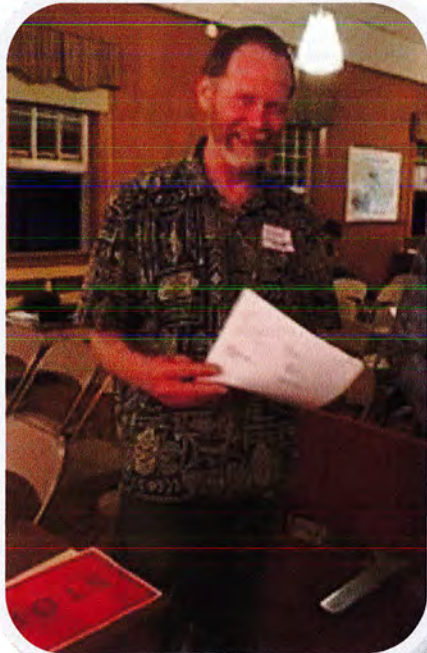
How would you vote for  
the war on herbicide  
spraying.

You - No - Undecided

21462



SC member, Glenn Harden, served as time keeper. Glens' job was to guarantee everyone equal time to tell something about themselves, and to have equal time to answer questions presented by the moderator.



SC member ,Malcolm Trupp, ran the sound system. Our moderator, SC member, Mike Gaber, used a microphone so he could be heard clearly by everyone, and each participant had the ability to use a microphone when addressing the audience.

#### LIST OF POTENTIAL QUESTIONS TO THE CANDIDATES:

1. Considering you will represent a primarily rural area of Lane County, what do you identify as the most critical issues facing this rural area and what do you plan to do about them?
2. One of the items on the docket for the next Lane County Board of Commissioners is redistricting. What criteria should guide the drawing of new Lane County Commissioner districts in 2021?
3. What should the Board of Commissioners do to improve response times by the Sheriff's Office in rural and unincorporated areas of Lane County?
4. What specific land planning decision made by the County Commissioners in the last 3 years do you strongly support or oppose and why?
5. If elected to the Board of Commissioners, what strategies if any would you advocate to provide for more affordable housing?
6. What do you see as the role of Lane County Commissioners to maintain and improve air quality, water quality, waste management, and land use? What grade would you give the current Board in fulfilling that role?
7. Lane County seeks State funding for a portion of a proposed new County Courthouse. What portion of that project should Lane County residents bear? What's your Plan B if the proposed land swap between Lane County and the City of Eugene falls through?
8. The federal spending bill includes funding for the Secure Rural Schools program for two years, which would aid Lane County and other rural counties affected by the decline in revenue from timber harvests on federal lands. What should be Lane County's priorities for this funding?

On the inside of the program was listed questions that the candidates could be asked if there was time. The audience questions however took up the time allowed.





## Adopt-A-Road Program

Spencer Creek Grange again participated in a Lane County Organized Program to help keep our roads clear of litter. We walk a 5 mile stretch of Lorane Highway that surrounds our



Grange Hall picking up trash. The County provides the flags, vests, bags & pickers then picks up the trash afterwards. Wearing the gear is important when walking alongside the road. This community service is one way we can show the pride we have in our community.



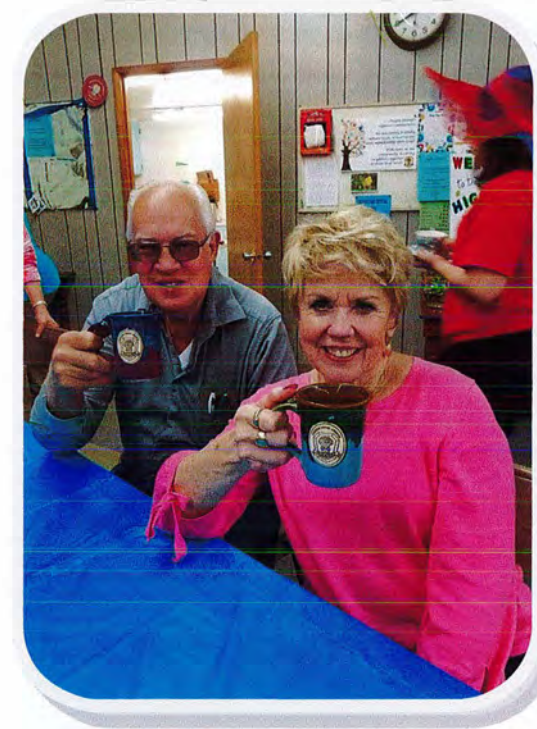
Pictured above are some of the members and community neighbors who participated in the Adopt the Road Project. Members included Douglas Trupp, Malcolm Trupp, Jamie Gaber, Steve Taylor, Jeanne Taylor, Mike Gaber, and several others not pictured.



Each year, the trash tells a story....This year more told tires and less used diapers and empty wine bottles!



## Lane Pomona High Tea



The Triple Crown High Tea, sponsored by Lane Pomona GWA, was held on Sunday, May 20th. It was fun to visit Goshen Grange who hosted the event. Those attending was asked to bring your own “tea” cup and finger food.

SC members, Malcolm & Cookie Trupp attended and chose to bring their favorite “Grange tea cups”!

The theme “Triple Crown” was chose because the Lane Pomona GW chairman, Priscilla Phillips, is a big fan of horse racing. The theme was evident from the table decorations to the games played. Stylish hats were paraded around and prizes were awarded.

The event was well attended and every one had an opportunity to visit with other Grangers from through out the County.





## Strawberry Shortcake Fundraiser

Lane Pomona sponsored a Strawberry Shortcake Festival. The festival is a fundraiser for Lane Pomona Grange and was held June 9th at Herrick Farms. Even though the weather was cold and rainy at times, we still sold out of strawberry shortcake!



SC Grange members Malcolm and Cookie Trupp volunteered to help with the event.



STAPLES



## Participation at the Lane County Fair

Spencer Creek Grange has participated in the Lane County Fair since its beginning. Some 40 years ago, we were allowed to have a food booth serving breakfast, lunch, and dinner along with a beautiful display in the Agriculture Building. As things do change with times, so did the fair and our support in partnering with the growing Lane County Fair. In more recent years, we show our support by volunteering to spend time in the building through out the week of the fair, presenting Agriculture displays, entering the Scarecrow contest, and participating in several events during Grange Day.



The Lane County Fair was July 18-22.

The theme the members chose this year was "Spencer Creek Grange Connecting with Agriculture, Community, Family."

Cookie Trupp and Stephanie Schiffgens Co-Chaired the Fair Display Committee.

Suzanne Whittington and Jeanne Taylor served on the committee.

Mike Gaber, Jamie Gaber, and Cookie Trupp volunteered to help at the information table and to walk about visiting with Fair goers and answering questions about Grange.

The SPG display took the "Peoples Choice" fourth place award and received \$100 from the fair for its entry.





# PEOPLES CHOICE AWARD

## LANE COUNTY FAIR—2018



This Fourth Place Certificate is Awarded To

*Spencer Creek Grange No. 855*

Theme—The Grange and Agriculture  
*Lane Pomona Grange No. 14*

*M. J. F. F.*

Signature

*10/17/2018*

Date

*Ken Schreger*

Signature

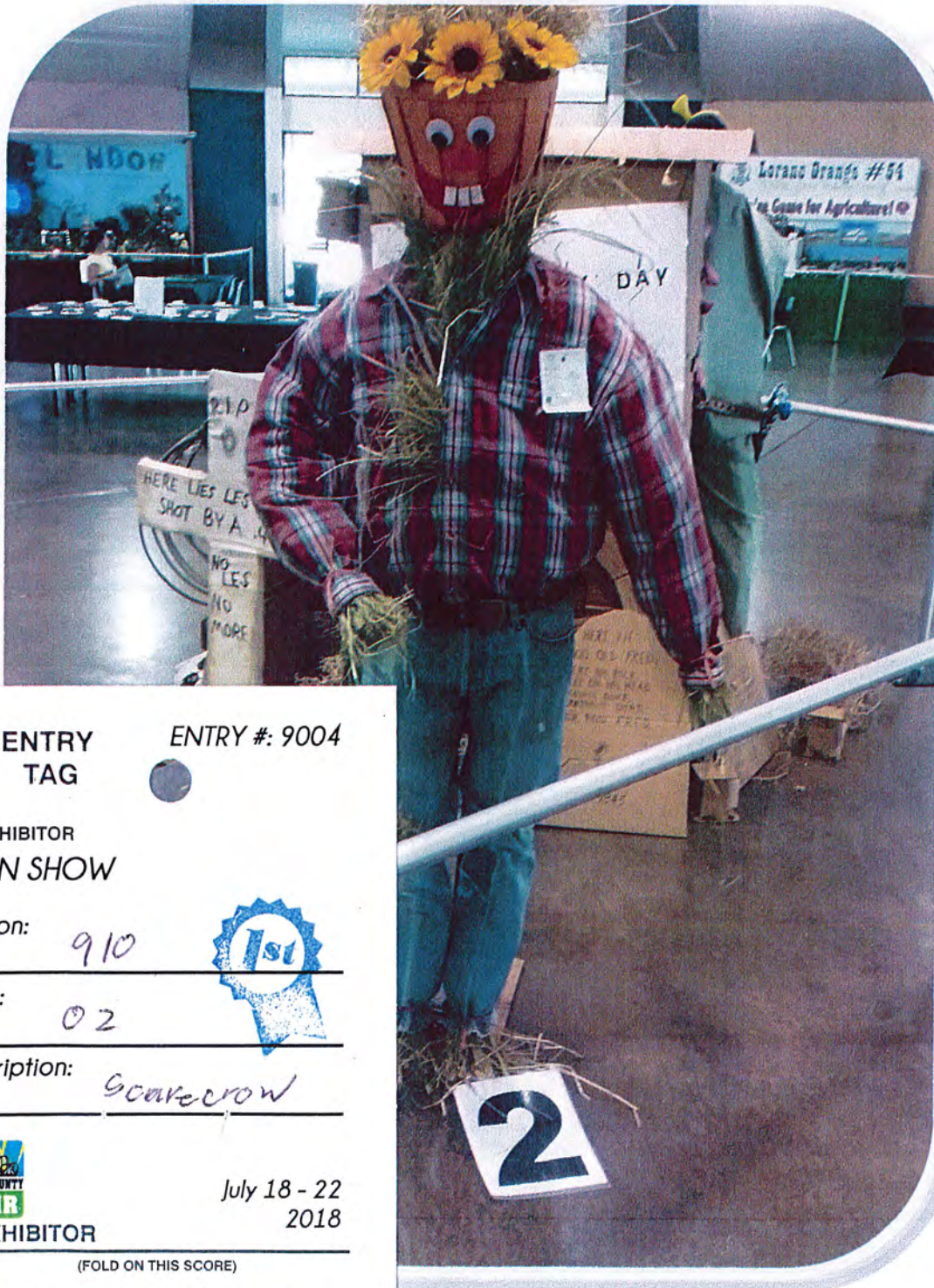
*10/13/18*

Date



## Grange's Scare Crow Entry in the Lane County Fair

The members of Spencer Creek Grange participated in creating a "Scarecrow by Committee". This year Jan and Charlie Messenger were co-chairs. Below is pictured our entry in the Lane County Fair Scarecrow Contest which was awarded the 1st place ribbon.



ENTRY  
TAG

ENTRY #: 9004

EXHIBITOR  
IN SHOW

Division: 910

Class: 02

Description: Scarecrow

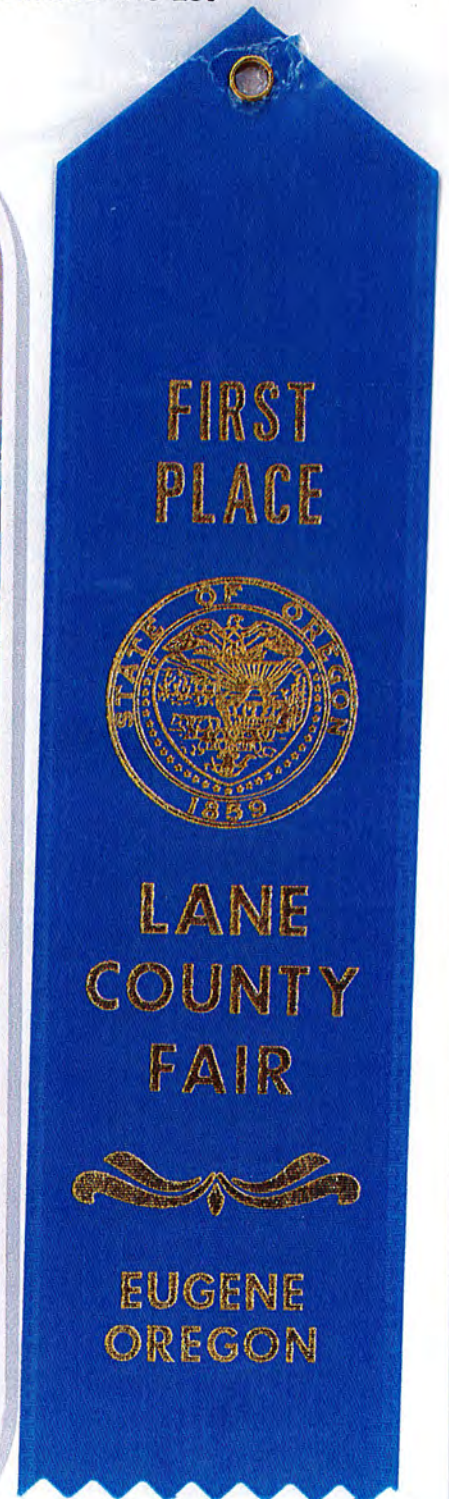


EXHIBITOR

July 18 - 22  
2018

(FOLD ON THIS SCORE)

Spencer Creek  
Grange







The Lane County Fair was held July 18 through July 22 in Eugene. Malcolm Trupp, Spencer Creek Grange member, works with the Lane County Fair as their Agriculture/Grange Fair Coordinator, in promoting the Agriculture/Grange displays and overseeing the events in the Wheeler Building.

Under Malcolm's supervision, Wednesday, July 18 was designated as **Grange Day**. Grangers were able to get in at a reduced rate by presenting a coupon at the ticker booth that had been printed in the Oregon State Grange paper.



On Grange Day, the Lane Pomona Grange, in partnering with the Lane County Fair, sponsored Veggie & fruit Dress Up Contest for children ages 2 to 10. Malcolm provided judges to judge the over 250 entries. Spencer Creek Grange member Cookie Trupp served as one of the judges.



# 2018 LANE COUNTY FAIR Special Award

Awarded to:

SPENCER CREEK Grange #855

In recognition of:

Display + volunteerism at the Lane County Fair



*[Handwritten Signature]*

Fair Coordinator Signature

*[Handwritten Signature]*





# Thank You

Malcolm,  
Thank you for another  
wonderful Fair! It  
wouldn't be possible  
without all of your  
support and hard  
work! We really  
appreciate all that you  
do and give to the  
department and  
hope to have you back  
next year!

Sincerely,  
Emily



On Grange Day, Spencer Creek was one of 15 other Granges to provide and serve 165 dozen Cookies to fair goers. Lane Pomona provided punch and water.

Spencer Creek also sponsored a #Best of Show" vegetable category and provided volunteers to help patrol the Agriculture/Grange building on one of the days during the run of the fair.

"Display an Important Event" was the theme for the Grange Workers Activities displays. These displays are much smaller then the Grange displays and have specific rules. They are judged by non grangers and this year our display took Second place!



Our "Candidates Forum" was the theme for our display.





# GWA DISPLAY AWARD

LANE COUNTY FAIR—2018

This Second Place Certificate is Awarded To

*Spencer Creek Grange No. 855*

Theme—Display an Important Event

LANE POMONA GRANGE NO 14



*Melvin D. Tapp*

Signature

*10/13/2018*

Date

*Ken Schweiger*

Signature

*10/13/18*

Date



Flyers displayed in clear  
stands on our tables

## SPENCER CREEK GRANGE COMMUNITY SERVICE OUTREACH FOR 2018

Proceeds from our Fund Raisers have supported  
the following local programs:

- \* PCK-Positive Community Kitchen
- \* Lane County Fair-Best of Show
- \* Soroptimist PinkSox RunWalk Cancer Awareness
- \* Sheldon High School Choral
- \* Churchill High School Choral
- \* 4-H planter boxes
- \* Lane School Special Ed School

Thank You for supporting our events throughout this year!

Check our website for other events: [www.spencercreekgrange.org](http://www.spencercreekgrange.org)

**Spencer Creek Grange located at the corner of McBeth Road and  
Lorane Highway in South West Eugene**

Example of Donations to Area Facilities

Date 8/21/18  
Received by Eugene Mission IRIS LEE

DONATION RECEIPT

Your donation brings stabilization and long-term wellness solutions to homeless men, women and children of Lane County!



Donor's Name Spencer Creek Grange  
Address Eugene, OR

Also:  
Food for Lane County  
Veterans  
Goodwill Industries

We NEED and gratefully ACCEPT the items below, which are USEFUL ITEMS that are essential to help us feed, clothe and shelter our guests and provide necessities upon move-out to housing.	# Items, Bags, Boxes, or Pounds	Estimated Value Set by DONOR
<b>U</b> sable Bicycles and Locks		
<b>S</b> hoes (Practical/Good Condition)		
<b>E</b> ggs, Milk, Butter, Cheese, Oils, Coffee, Cereals, Veggies, other Food Items	✓	
<b>F</b> urniture and Housewares for Move-Outs		
<b>U</b> nderwear and Socks (New)		

Thanks you for your donation!

St. Vincent dePaul Society of Lane County acknowledges that a non-cash donation was received from:

NAME: \_\_\_\_\_  
RECEIVED BY: SB DATE: 2/24/18

St. Vincent de Paul Society of Lane County is a 501(c)(3) nonprofit organization. Your donation is tax deductible to the fullest extent of the law. No goods or services were provided in exchange for this donation. Federal law states that clothing and household goods must be in 'good used condition or better' in order to qualify for tax deductions. This serves as your tax receipt. Please list items donated below.

3 bags of books  
clothing  
Housewares



together, we make a difference.

THANK YOU for donating to the Eugene Mission and GIVING RISE TO HOMELESS



## Very Berry Pancake Breakfast

The Spencer Creek Grange #855 hosted its 12<sup>th</sup> annual Very Berry Pancake Breakfast Sunday August 19th. We started the event at 9:00am and the weather was perfect. The locally sourced ingredients for the breakfast included: a variety of berries (donated by Grange and Community members) with hand whipped cream, whole wheat pastry flour, cornmeal and eggs were hand blended to make spectacular pancakes. "These are the best pancakes I have ever had..." is what we hear many times every year..

Advertising signs go up about 10 days before the event. Articles go to the local papers and information is posted on our reader board. Area Bicycling clubs plan their route to include a stop by.



Menu: "Scratch" Pancakes, homemade plum/berry syrup with whole berries and real whipped cream, juice, tea and coffee. This year, the event was chaired by a committee, with Cookie Trupp organizing the outside and Jan Messenger the kitchen, and Mike Gaber overseeing the pancakes. The Old Time Fiddlers provide entertainment. The first year served 130 people, and now we average over 200. This event has developed a faithful following!







It takes a big crew of volunteers to make this event a success. Left- Mike Gaber, mixing pancakes, reported that we served over 200 guests an average of 2 1/2 pancakes each. Jamie Gaber, Harold Whittington, and Douglas Trupp are working at the sink. Jeanne Taylor is whipping cream.

We use few paper products, real plates, silverware, glasses & cups. It's a fun event to work & a great opportunity for person to person contact.



Steve Taylor, our head "Pancake Flipper",

Is busy at work while Suzanne Whittington is busy filling orders. As our customers arrive, they are seated at our outside dinning are, are asked to fill out an order slip and hand it to a waiter. The drinks are all self serve at the beverage table also located outside.

We had 15 Grange members donate 87 hours and 15 non-Grangers donate 44 hours of volunteer time to make this event a success.

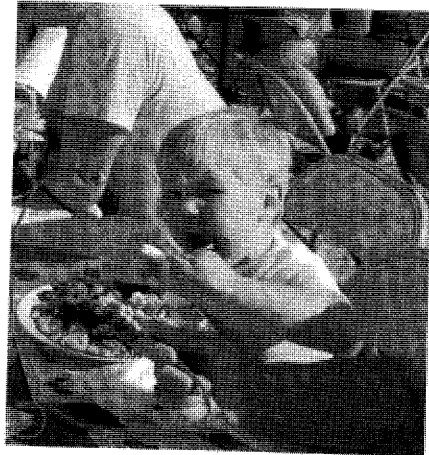


STAPLES



## Spencer Creek Keeps It Simple: Pancakes and Berries

Spencer Creek Grange #855, Lane County, hosted its 12<sup>th</sup> annual “**Very Berry Pancake Breakfast**” on Sunday August 19<sup>th</sup>. Keeping it simple, focusing on locally sourced, fresh ingredients, while adding a heaping spoonful of Granger and community support is their recipe for success!



*People of all ages enjoyed the pancakes.*

They once again enjoyed serving over 200 guests who quickly devoured an average of 2-1/2 pancakes each (they were nice big and fluffy too!). The clear majority of the orders included berries and whipped cream. Three orders of gluten-free pancakes were also served. The males who attended again consumed more pancakes than the females. How surprising! The most common male name this year was John, and for the women it was Ann. Table #3 was the most popular with 27 patrons enjoying the meal at that location; however, it was table #4 that took the title for most pancakes per person at 2.75 pancakes per person.

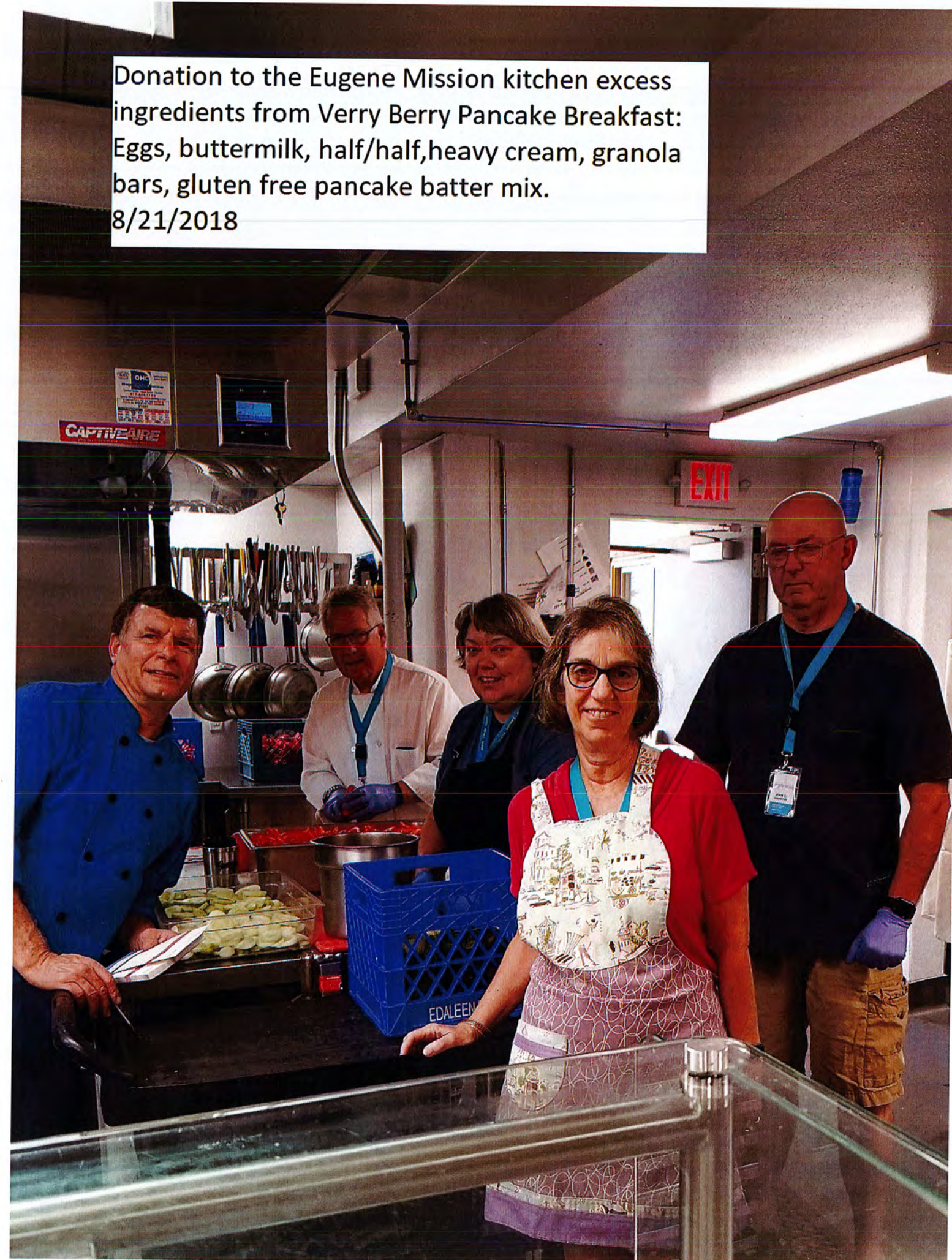
Of course, the event would not have been the success it was without the help of dedicated Grangers and the selfless volunteering of non-Grangers. Check it out: fifteen Grange members donated 87 hours

of their time together with 15 more non-Grangers who pitched in another 44 hours for a total of 131 man-hours of volunteer time to complete the event. The Grange appreciates all the help and hard work involved and thanks everyone who volunteered.

Spencer Creek Grange happily donated the leftover ingredients to a local homeless shelter which appreciated the donation. It was once again a wonderful fund-raising event that relies on the generosity of the patrons served as only donations are accepted for the meal. The Grange looks forward to serving all the hungry smiling faces again next year.



Donation to the Eugene Mission kitchen excess ingredients from Verry Berry Pancake Breakfast: Eggs, buttermilk, half/half, heavy cream, granola bars, gluten free pancake batter mix.  
8/21/2018



STAPLES



## Recycling Day at the Spencer Creek Grange:

Sept 29th -- 10 am to 2 pm

On September 29th 2018, the Spencer Creek Growers Market at the Spencer Creek Grange organized a convenient, local drop-off collection point one day ahead of the [Lane County Waste Management's First Free Plastics Roundup Event](#). Collection bins marked for three categories of plastic (#2, #4, #5) were made available and two Lane County volunteers from the Master Recycling Program were on hand to assist the public in identification and sorting. The day following the event, all of the collected plastic was taken to the Glenwood Transfer Station by another volunteer. From there it was subsequently transported to Denton Plastics in Portland, one of the few remaining companies that accept recycled plastic. The collected plastic is turned into park benches, decking, flower pots, electronic components and other items.

In addition to the public recycling event taking place that day, the market at the Spencer Creek Grange had 14 produce and craft vendors, an outdoor restaurant serving an all-local lunch and live acoustic music.



STAPLES



## Spencer Creek Grange Barn Dances

This year we had several Barn Dances. We are so happy to have our member, Stephanie Schiffgens, serve as the Dance Chairmen. Our dances are one of our Community Service events that draw all ages and lots of families. We charge a minimal entrance fee and the public checks our website for up to date information about the up coming dances. Member, Cookie Trupp, creates the flier that are distributed. Other members put up Dance signs by the road to help advertise the event.



Woody Lane is a professional caller and is in his fourth year calling our dances for us. He offers a beginners workshop at the beginning of the evening. This year, we have hired a local band, Breakers Yard, to provide the live music.

Our dances draw a fairly young crowd who's parents enjoy coming and dancing too!

Here is a great evening picture of the parking





**Dance into Fall!**  
**Grange Barn Dance**

**Friday, Sept. 28th, 2018**  
**7 to 10 p.m.**  
**Spencer Creek Grange**  
Lorane Hwy & McBeth Road  
[www.spencercreekgrange.org](http://www.spencercreekgrange.org)

**Admission: ~\$6 ages 12 and up**  
**\$3 Children 11 and younger**

Beginners workshop at 7:00 p.m. All dances will be taught

<small>Caller:</small> Woody Lane	<small>Refreshments and Snacks</small> All Welcome	<small>Music By:</small> Breakers Yard
--------------------------------------	-------------------------------------------------------	-------------------------------------------



We want to continue offering our Barn Dances since this is another way to use our building for community events.



STAPLES



## 4-H Cloverbuds



Member Stephanie Schiffgens, 4-H Cloverbuds leader, meets at the Grange once a month along with several other 4-H groups. Stephanie works with young 5 & 6 year old children. Cloverbud members may raise small animals such as rabbits, covies, cats, small dogs, chickens, and mini-goats. Stephanie's group raises rabbits and enjoys bringing their "projects" to the monthly meeting to learn to show and tell about their pet.







The 4-H Cloverbuds and the 4-H groups that meet at the Grange wanted to take on some projects that would benefit the Grange. Planting flowers in flower boxes was their first project. The flower boxes are attached to the railing on the front porch of the building. They have been a nice addition and beautifies the Grange.

As a result of SC Grange sponsoring these 4-H groups, we have gained 2 more new members.



STAPLES®



# 34th Annual Chicken BBQ



The Spencer Creek Grange Annual Chicken BBQ took place on September 16. This year marked our 34th year for the event! The Chicken BBQ is one of the main fund-raisers for the Grange. We served 169 dinners to hungry guests. Our signs for the event were strategically placed at two locations on Lorane Highway and at the intersection of Lorane Hwy and Baily Hill Rd. approximately 2 weeks before the event. Event attendees are mostly comprised of local community members and neighbors. Many guests of the event report that they wait for the signs to go up each year as a reminder to come.

The chicken is prepared and cooked by Mike Gaber and his committee, Malcolm Trupp, Charlie Messenger, and Mark Walker.



STAPLES





Cookie Trupp checking with Mike Gaber about when the checking is projected to be done.

Cherie Babinec sold dinner tickets at the door.



Information material was placed on the tables along with custom printed placemats, printed by Malcolm Trupp.



Member Katy O'Sullivan enjoyed her job as drink mixer.

**COMMUNITY**

**Locavore Hamburger Luncheon** — 10 a.m. to 2 p.m. Saturday, Spencer Creek Grange, 86013 Lorane Highway. All food locally grown. Hamburgers, side dishes, pies and entertainment. Cost is \$12 for the full meal. Benefit for the Spencer Creek Growers Market. 541-485-8162.

**Chicken Barbecue** — Noon to 4 p.m. Sunday, Spencer Creek Grange, 86013 Lorane Highway. Meal includes chicken, side dishes, rolls and fruit crisp for \$9. Proceeds benefit grange activities. 541-485-8162.

Notice printed in The Register-Guard on Friday, September 14, 2018.

239475



Jan Messenger made the coleslaw. A “friend of the grange” Jenny Miles. Prepared and donated the tasty baked beans. Approximately 8 fruit crisps were prepared by Grange members and friends: Cookie Trupp, Suzanne Whittington, Jeanne Taylor, Genie Harden, Stephanie Schiffgens, Cherie Babinec, and Jenny Miles. Members Harold Whittington, Albion Spahan, Mark Walker and Jamie Gaber manned the “mighty dishwashing team” that ensured the dished were properly cleaned and sanitized. The efficient and hardworking team also saw to it that the Grange kitchen was left spotlessly clean after the event.



Jeanne Taylor is selecting the ripe tomatoes to be served.



We estimate approximately 120 hours from members, and 24 hours from friends/ family/neighbors were cheerfully donated to make this event a wonderful success.

This year the Grange received the charcoal as a donation from Kingsford Manufacturing Co. The chickens were sourced from Draper Valley Farms (Oregon grown) and donated by Long’s Meat Market. We also received a \$25 gift card from Costco.



The 2018 Spencer Creek Grange annual Chicken BBQ took place on September 16<sup>th</sup>, 2018. This year was the 34<sup>th</sup> year the event has been successfully planned and executed. The BBQ is one of the main fund-raisers for the Grange. We served 169 dinners to guests. The advertizing signs for the event were strategically placed in two places on Lorane Highway as well as on the Grange Hall approximately 2 weeks before the event. The attendance is mostly surrounding community members and neighbors. Many people wait for the signs to go up, as a reminder to come. The chicken is prepared & and cooked by our master, Mike Gaber and his assistants, Malcolm Trupp, Charlie Messenger, and Mark Walker. Together with the chicken, we serve beans, coleslaw, cherry tomatoes, rolls w/butter, and fruit crisp, fruit punch & coffee. Jan Messenger made the coleslaw. A "friend of the grange" Mrs. Jenny Miles, made and donated the beans, and approximately 8 fruit crisps were made by members and friends of the Grange: Cookie Trupp, Suzanne Whittington, Jeanne Taylor, Katie O'Sullivan, Stephanie Schiffgens, Cherie Babinec, and Jan Messenger. Member Bob Galvin created and donated tasty homemade peach ice cream, it was a real hit! Members Harold Whittington, Steve Taylor, Mark Walker, Douglas Trupp and Friend of the Grange Thomas Gaber were the "mighty dishwashing team" that ensured the Grange kitchen was left spotless and clean after the event. There were also 3 kids who helped serve, bus, and clean: Claire McDonald, and the Taylors' 2 grandsons. Also new member David Yordy and his wife Marilyn helped serve/clean and bus and whatever was needed at the time. This year the Grange was fortunate again to receive the charcoal as a donation from Kingsford Manufacturing Company. The chickens came from Draper Valley Farms (Oregon grown), and the donation was facilitated by Long's Meat Market. Because of these generous donations, we were able to keep the price down for dinners, and make a profit of \$1,177.00.

Membership participation for the BBQ is what makes the event a success. Preparation of the Grange (table setting, silverware/ napkin wrapping), preparation/cooking of chicken, cashiering, counter serving, table busing, clean-up/dishwashing, advertising: are the jobs that are completed primarily by members. An approximation of 120 hours from members, and 24 hours from friends/family is reported.

Committee Chairperson



Jamie Gaber

Lecturer

STARTS





# Menu:

Bar-b-qued Chicken  
 Coleslaw, Baked Beans,  
 Rolls & Butter,  
 Fruit Crisp dessert, fresh  
 cherry tomatoes,  
 Coffee & Punch



Above, Cookie Trupp  
 helping to the serve  
 chicken and David Yorty  
 finishing off the plate  
 with salad & rolls.





# SPENCER CREEK GRANGE

34<sup>th</sup> Annual Chicken Bar-b-Que

Sunday, September 16, 2018



A special thanks to our generous sponsors



Spencer Creek Grange serves its  
**Famous Bar-b-que'd chicken !!**

## Meal includes:

Coleslaw, Baked Beans  
Rolls & butter,  
Fruit crisp dessert, fresh  
cherry tomatoes and coffee  
& punch !!



September 16<sup>th</sup>, 12noon - 4:00 p.m.

location: corner of Lorane Hwy & McBeth Rd.

½ Chicken meal	\$9.00
¼ Chicken meal	\$7.00
½ Chicken only	\$7.00
Side dishes only (if available)	\$3.00

Call 541-683-5682 or email [mikegaber@gmail.com](mailto:mikegaber@gmail.com)  
for more information



## The Spencer Creek Community Growers Market

The Spencer Creek Community Growers Market, sponsored by the Spencer Creek Grange, takes place each year in the Grange parking lot.

Each Saturday during the 20 week season there are about a dozen produce and craft vendors participating, along with food artisans, plant nurseries and livestock producers who offer baby goats during the Spring! There is also a popular outdoor cafe serving up a locally-grown buffet-style lunch.



On October 6th at the close of their 9th market season, the Spencer Creek Growers Market held their annual Harvest Fair which includes a free cider pressing for everyone bringing buckets of apples from their backyard trees.



A harvest lunch was served. Live music was performed throughout the day by 5 local bands. Twenty-one vendors participated.

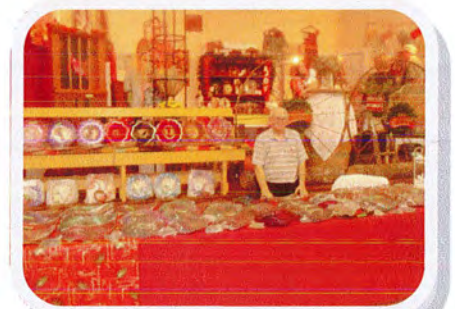




## Holiday Bazaar



The Spencer Creek Grange Holiday Bazaar was held Saturday, November 10th, from 9:00-3:00. 13 Vendors rented tables for \$5.00 each. A lunch of chili, cornbread, and cookies was served from 11:30 to 1:00.



The Holiday Bazaar was chaired by Harold Whittington .

A large variety of gifts, decorations, pottery , jewelry, scarves, home made postcards, and baked items among many other things were offered for sale.



The Holiday Bazaar is more of a community service project than a fund raiser. Harold and other members put in 21 hours, and booth rental brought in \$65. Donations netted \$144.50.





## Grange Open House



Sheldon Irish Dublin Aires



Churchill Downey Street Singers



Community Service Chair Cookie Trupp, presented \$100 to each of the school directors to go toward their travel



Jamie Gaber and Katy O'Sullivan placing cookies in serving trays. During refreshment time, everyone helps themselves to cookies, punch & Coffee.



The visiting coral groups and their friends and family have a great time visiting with everyone. A good way to end a fun evening!







We celebrated another successful Grange with an evening open house and program on Monday, December 3rd. We scheduled the Program/ Open House in December so we can present to the public a review of our own Grange's events and accomplishments for the past year. We invited two youth choirs from local High Schools to be a part of our program therefor many of the approximate 100 guests who filled our hall were young and interested in our Grange and it's purpose in the community.

Our program was opened by a welcoming from our Master/President Mike Gaber. Cookie Trupp, Community Service Chair, then spoke about Spencer Creek's outreach and all of the people & organizations that we assist through our community service projects, how we raise our funds and thanked every one for their continued support through the year. This personal touch was very affective and people commented during refreshments how much they enjoyed the presentations. Through our presentation we were also able to convey to the younger generation the value and importance of giving back to the community.

The evening was designed to present information about Spencer Creek Grange in the best entertaining way so the public would leave with an up to date impression of our organization. Following our presentation about the Grange, the two choral groups sang. Each group of singers had brought with them family members and friends which added to our audience of community neighbors and friends of the Grange.. This program lasted a little over an hour and provided great exposure for our Grange to several dozen youth age students as well as to many adults in our Eugene area. The members of our community and beyond anticipate this evening and look forward to attending.

The program was then followed with social time, cookies, punch, and coffee. This format provided an entertaining informative evening for our guests and Grange community.

STAPLES



## SECTION THREE:

---

**Grangers Serving**

**Community**

**And Other Venues**



## INDIVIDUAL GRANGERS VOLUNTEERING

### FOR SERVICE OUTSIDE THE GRANGE



Mike Gaber:

- C.E.R.T. --- Community Emergency Response Team  
Continuing education: Tsunami Earthquake Preparedness.
- C.V.N.W. --- Chezem Valley Neighborhood Watch  
Coordinate meetings, News letter, and obtain speakers
- MASTER WOODLAND MANAGER TRAINING  
Certificate of Achivement
- PINKSOX RUN/WALK  
Participated in fund raiser for Breast Cancer survivors



Jeanne Taylor:

- TWIN OAKS ELEMENTARY SCHOOL  
Teacher's aid
- LEAGUE OF WOMENS VOTERS  
Volunteered in the office
- STITCHEN FOR KIDS NORTHWEST  
Spends approx. 18hrs/month sewing clothes for  
The Doll Project Program.





Steve Taylor:

- MEALS ON WHEELS  
Delivers Senior Meals to their homes  
Has served as a volunteer since February, 2005
- Fernridge Wildlife Area  
Tuesday Volunteer/weekly



Cookie Trupp:

- THE GOOD SHEPHERD LUTHERAN CHURCH  
Council member: committee member  
Worship assistant  
Thrivent Financial contact
- DAISY DUCKS --- Oregon Boosters Association  
Chair of "Evening with the Daisies" Event  
Treasurer and on Executive Board
- SOROPTIMIST: Business and Professional Women  
Breast Cancer "Walk to Live" Fund Raiser Chair  
Reds Whites and Blooms Fund Raiser Committee  
Treasurer and on the Executive Board
- PINKSOX RUN/WALK - CHAIR  
Fund raiser for Breast & Ovarian cancer survivors  
Coordinated float in Eugene Celebration Parade



Suzane Whittington:

- CARE GIVER  
Provides transportation for elderly  
Prayer quilts for the sick
- THE GOOD SHEPHER LUTHERAN CHURCH  
Making quilts for mission  
Alter Guild





Malcolm Trupp:

- THE GOOD SHEPHERD LUTHERAN CHURCH  
Treasurer of the Congregation  
Building & grounds – repairs
- PROFESSIONAL ENGINEERS OF OREGON  
Sponsors and mentors a High School student entering the Engineering School of Education at Oregon State University
- LANE COUNTY FAIR  
Land produce Coordinator and Grange Coordinator
- PINKSOX WALK/RUN  
Fundraiser for Breast Cancer survivors



June Strand:

- THE GOOD SHEPHERD LUTHERAN CHURCH  
Making quilts for missions  
Layettes for World Relief



Harold Whittington:

- THE GOOD SHEPHERD LUTHERAN CHURCH  
Head Usher  
Assistant to the Alter Guild





Michelle Croy

- LINN & BENTON COUNTY FOOD SHARE  
Helped to sort food items brought in by Mail Carriers



Courtney Croy

- CORVALLIS VOLLEY BALL ACCADEMY  
Assistant Coach/working with 16 year old girls
- PHILOMATH YOUTH ACTIVITY CENTER  
Volunteered to help work on a Fund Raiser

Bob Burry

- CHURCH WORSHIP  
Plays in the worship band



Jamie Gaber

- EUGENE MISSION  
Provided food donated from football tailgates





Peggy Palmer:

- CARE GIVER  
Provides child care for 2 great grandkids



Douglas Trupp

- THE GOOD SHEPHERD LUTHERAN CHURCH  
Building & grounds – repairs
- FAMILIES IN NEED & HOMELESS  
Cuts & splits firewood and volunteers to assist with auto repairs for individuals in need of financial assistance



Jan Messenger

- POSITIVE COMMUNITY KITCHEN  
Help package meals delivered to women battling cancer



Mark Walker

- RAIN BOW WATER BOARD  
President



- COMMUNITY EMERGENCY RESPONSE TEAM (C.E.R.T.)  
Eugene/Springfield Certified Instructor
- ROTARY CLUB OF SPRINGFIELD  
Member
- RESTORATION FELLOWSHIP CHURCH  
Worship Band



Cherie Babinec

- BOYS AND GIRLS CLUB  
Mentor

Glen Harden

- SPENCER CREEK GROWERS MARKET  
President of the Board

- Stephanie Schiffgens  
4- H Cloverbuds  
Group leader

David Yorty

- Spencer Creek Growers Market  
Liaison for the Market and the Grange



THIS  
**CERTIFICATE of ACHIEVEMENT**

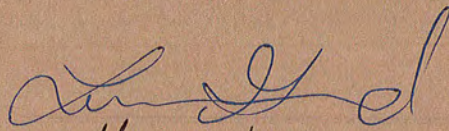
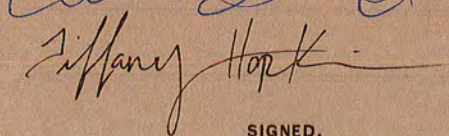
ACKNOWLEDGES

**Mike Gaber**

FOR SUCCESSFULLY COMPLETING THE

**Master Woodland Manager Training**

DECEMBER 13  
**2018**

SIGNED,

Lauren Grand, OSU FNR Extension Agent  
Tiffany Hopkins, MWM Coordinator





## 26th ANNUAL PINK SOX RUN/WALK TO LIVE



Sponsored by Soroptimist International  
of Eugene and Junction City

**Saturday  
Sept. 29, 2018  
Race Start: 9 am  
Alton Baker Park**

**Register online at:**

[www.RunwalkForBreastCancerEugene.com](http://www.RunwalkForBreastCancerEugene.com)

[www.EclecticEdgeRacing.com](http://www.EclecticEdgeRacing.com)

**A 5K-10K Timed Event**

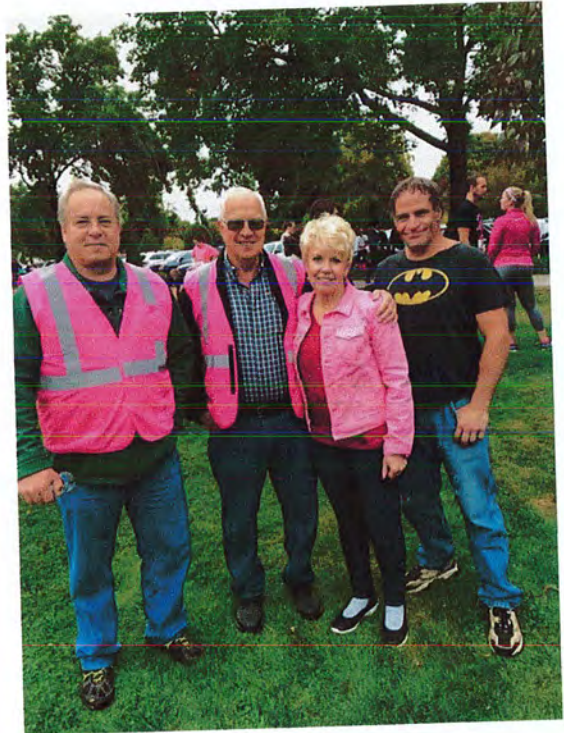
Packet pickup & race day registration: 8AM

**\$35** thru Sept 22

**\$40** Sept 23-29 Race Day

**All funds disbursed locally thru  
Willamette Valley Cancer Center**

For donations, make checks payable to SIE, mail to  
P.O. Box 10664, Eugene, OR 97440



Cookie Trupp serves as chair of the PinkSox Run/Walk Fundraiser.  
Malcolm Trupp, Douglas Trupp, and Mike Gaber helped with the event.



SECTION FOUR:

**Extended Grange**

**Area Projects**

STAPLES®



**Section Four:**  
**EXTENDED GRANGE**  
**AREA PROJECTS**

1. Grange Connection Campaign
2. Featured Quilt Square
3. Grange Visitation
4. Ag Fest
5. Community Service Outreach List
6. Donation to Stitchin' for Kids
7. Dogs for Better Lives
8. Sponsor OSG Jr. Talent Contest
9. OSG GWA State Doily Contest Sponsor
10. OSG Foundation
11. OSG Honor Grange Award
12. Grange Connection Celebration
13. Volunteer of the Year Award
14. OSG Lecturer's Contest Entry
15. OSG Lecturer
16. OSG Community Service Recognition
17. Volunteering in the Log Cabin

STAPLES



## Grange Connections Campaign

"Grange Connections" is the 2018 continuation of last years GrangeUp 17 membership drive for 2017. Cookie Trupp, who serves on the OSG Program Development Team, and Malcolm Trupp, OSG Deputy, attended a meeting of State Grange directors, district chairs, and State officers in January. At the meeting, Cookie agreed to attend 3 Granges and give the Grange Connections presentation.



In February, Cookie & Malcolm visited Mary River Grange to present them with the Grange Connections tools and information.



In March, they also enjoyed visiting Long Tom Grange and sharing with their members the Grange Connections information.

Above, Cookie, Malcolm, along with SCG Master Mike Gaber and SCG Lecturer Jamie Gaber, visited Ada Grange where Cookie gave the Grange Connections presentation and delivered the recruitment tools.

STAPLES



### Featured Quilt Square

Marilyn Reiher visited Spencer Creek Grange and returned the pillow to Jeanne Taylor that was used in the "artifacts & art" traveling display depicting the history of the Grange in Oregon. On the front of Jeanne's pillow was a replica of her National Lecturer's Contest winning quilt square.

The traveling display that Marilyn assembled informing the public about the history of the Grange was accepted by Libraries and museums through out the state. This was in celebration of the 150 years of Grange.



## 150 Years of Grange April 28-June 24, 2018



STAPLES®



## Grange Visitation

In March, Spencer Creek Grange members visited Ada Grange in Florence. SCG Master Mike Gaber , Overseer Malcolm Trupp, Lecturer Jamie Gaber, and LAS Cookie Trupp is pictured below with members of Ada Grange.

We attended their pot luck which was prior to their meeting.

The members of Ada Grange are very enthusiastic about Grange and their meeting is held in full form with excellent member participation full of enthusiasm. We all had an enjoyable evening and had a great time visiting with every one.



STAPLES



## Ag Fest

A record crowd attended the 31st annual Ag Fest April 27-29 at the Oregon State Fairgrounds. The Oregon State Grange hosts an activity center in AgCounty where visitors had a chance to plant marigold, pepper or tomato seedlings into peat pots to take home to their own gardens or patios. They also had the opportunity to learn about the Grange with an emphasis on Junior Grangers and opportunities for families.



Malcolm and Cookie Trupp from Spencer Creek Grange volunteered to help in the OSG activity center. They enjoyed helping the children select their seedlings and to plant & water them. A steady stream of families stopped by the activity center and



Oregon State  
Grange



Oregon State  
Grange

Malcolm  
Trupp



Cookie  
Trupp



2349475





# Oregon State Grange

May 18, 2018

Dear Ag Fest Volunteers,

Thank you for your time and goodwill in your volunteer efforts at Ag Fest. As usual we gave away over 5,000 plants and made contact with thousands of individuals. Whether helping with the planting or handing out membership materials each volunteer promoted the Grange Fraternity and the fellowship and service we provide.

Individuals join the Grange in the community near them, but our role as a State organization is to make sure that they have a good impression of all Granges and Grangers and your help at Ag Fest was part of that effort.

So again, thank you for volunteering in these public relation efforts, I appreciate your time and talent in promoting the Grange!

Fraternally,

Susan Noah, Master  
Oregon State Grange

## Ag Fest Thank You

Thank you to those who helped with Ag Fest. We had a great two days.

Aislin McClain	Jan McCorkle	Morgan Eipp
Alice Nowicki	Jay Sexton	Paula Herrick
Alison Hennes	Jeff Dehne	Peggy Jillson
Belinda Sanchez	Jessie Jo Guttridge	Riley Reynolds
Bob Ludi	Jon Woo	Riona McClain
Breanna McKay	Joyce Parker	Roger Williamson
Briauna Herrick	Judy Hays-Eberts	Roweena Miller
Cameron Herrick	Kate McClain	Sally Clute
Cathy Kielling	Katrina Cooper Bowser	Sandi Ludi
<u>Cookie Trupp</u>	Ken Schwieger	Sonny Hays-Eberts
Dan LeBrun	Kim Woo	Susan Noah
Dean Kielling	Liz Dehne	Suzy Ramm
Dennis Chapman	Makiah Woo	Tim Dehne
Diane Kaser	<u>Malcolm Trupp</u>	Tina Reynolds
Dick Putnam	Marilyn Reiher	Vernon Herrick
Elaine Chapman	Mark Noah	Wanda Putnam
Heather Noble	Matt Kaser	
Jacki Sanchez	Mauricio Sanchez	

America's Family Fraternity



Flyers displayed in clear  
stands on our tables

## SPENCER CREEK GRANGE COMMUNITY SERVICE OUTREACH FOR 2018

Proceeds from our Fund Raisers have supported  
the following state wide programs:

- \* Autism-KindTree Products
- \* Oregon State Grange Junior Program
- \* Dogs for a Better Life
- \* Oregon State Grange Doily Contest
- \* Gifts for Senior Adults
- \* Oregon State Grange Foundation
- \* Stitchin for Kids

Thank You for supporting our events throughout this year!

Check our website for other events: [www.spencercreekgrange.org](http://www.spencercreekgrange.org)

***Spencer Creek Grange located at the corner of McBeth Road and  
Lorane Highway in South West Eugene***

STAPLES



May 25, 2018



*A Special Note —  
OF APPRECIATION!*

DEAR MRS. MESSINGER & GRANDFRIENDS,  
THANK YOU FOR YOUR \$500 DONA-  
TION TO STITCHIN' FOR KIDS. WE  
WILL USE IT TOWARDS THE  
PURCHASE OF A DOLL FOR OUR  
OCTOBER DELIVERY. YOU WILL  
THEN RECEIVE A RECEIPT FROM  
SEATTLE CHILDREN'S HOSPITAL. IT  
IS MY HOPE THAT YOU WILL  
RECEIVE A RECEIPT FROM S4K  
DIRECTLY WITH THE S4K3 NUMBER.  
MEANWHILE, THANK YOU FOR YOUR  
SUPPORT OF OUR MISSION THAT



SCG Member Jeanne Taylor  
holds example of doll and  
quilt purchased for Stitchin'  
for Kids.

23494752





## Donation Acknowledgement - Thank you for your generosity!

Rev May, 2017

Donor Information:

Date: MAY 7, 2018

Gift is from: (check one) ☐ Individual ☐ Company ☒ Group ☐ School ☐ Guild ☐ Child (age) \_\_\_\_\_

In Honor of: \_\_\_\_\_ In Memory of: \_\_\_\_\_

Donor Name(s): STITCHIN' FOR KIDS NORTHWEST

Contact Name: (If other than Individual) MEL ERICKSON

Address: 9719-52<sup>ND</sup> AVE NW

City, State: TACOMA, WA

Zip: 98446-5408

E-mail (Optional) mel.erickson@live.com Phone #: 253/861-4476

Please retain this receipt to substantiate your donation. \*A separate receipt for monetary donations will be mailed.

Please note: We cannot accept handmade or used items as indicated in the shaded boxes below.

Item	Quantity New	Quantity Handmade	Used	Item	Quantity New	Quantity Handmade	Used
Beanie Babies				Crayons			
Books				Hats			
Blankets/Quilts/Pillowcases		2		Movies DVD's			
Gift Cards - Card Value\$				Music CD's			
Girl Scout Cookies				Stuffed Animals		6	
Clothing				Toiletries			
Craft Kits				Toys/Games	3 CAR CARRIERS		
Craft Supplies				Video Games			

Other:

\* Cash/Checks Donation: \$

60 HEART FOR HEART DOLLS W/ WARDROBES (BOXED & HANDMADE)

If we are unable to use your donated items at Seattle Children's, they will still be put to good use. We will share them with our thrift stores or another local non-profit organization that serves people in our community.

No goods or services were provided in exchange for this donation. Please consult with your tax advisor regarding this donation and the requirements that must be met in order for it to qualify as a charitable contribution for federal income tax purposes. Tax ID: 91-1156519

### OFFICE USE ONLY

Received by: (print) \_\_\_\_\_

[Signature]

☒ Vol. ☐ Via Mail ☐ Security ☐ Fnd/Guild

Entrance: River ☐ • Ocean Fl # \_\_\_\_\_ • Child Life ☐ • FRC ☐ • Bellevue ☐ • Other: \_\_\_\_\_

Comments: \_\_\_\_\_ A B C D E

Card Sent ☐ Certificate Sent ☐ Letter Sent ☐ Not Required ☐ Other ☐ Data Base Entry ☐

**Donor Copy (Yellow) Office Copy (White) - send to Volunteer Services RC.3.820**





formerly:  
**DOGS for the DEAF**

May 29, 2018

Spencer Creek Grange #855  
P. O. Box 25425  
Eugene, OR 97402-0456

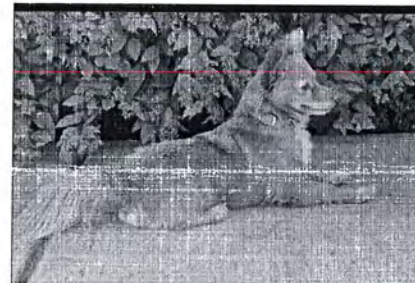
Dear Mr. Trupp,

“He’s the best thing to come into our lives since the grandkids,” says Bob. “He’s so amazing!” Harrison is a Pomeranian mix found at a shelter in Southern Oregon and he is now alerting Bob to sounds in Florida. Thank you!

Your gift of \$50.00, received on 05/23/2018, rescues dogs like Harrison and trains them to help people like Bob. You are helping to create freedom and independence for dogs and people all across the country.

Gratefully,

Ronald Holzkamp  
Board Chairman



Harrison  
Hearing Dog - Florida



Trooper  
Hearing Dog - Illinois



Ginger  
Hearing Dog – North Carolina

*Dogs for Better Lives, Federal ID #93-0681311, has never sold or traded the information of its donors. No goods or services were provided in exchange for this donation. Gifts are tax-deductible according to current law as written in Section 501(c)(3) of the Internal Revenue Code.*



Heather Elders

OSG

10/14

Samuel B Jordan

K V M

Taylor Riley

in dress

Jade

W

Ethan A M O R

Rebecca T T H N E G

Malcolm and Cookie Trupp

Thank you both for not only your donation of \$120.00 for our Juniors but for participating in our degree as candidates. Your constant support of the program is greatly appreciated. The kids were excited to receive \$25.00 each for winning the talent show, instead of just \$10.00

- Megan + Elizabeth

STAPLES



## Sponsor OSG GWA Contests

Spencer Creek Grange sponsors the Oregon State Grange GWA *Crocheted Doilies* contest. The sponsorship is \$50.00.



Malcolm and Cookie sponsor *Purses and Totes* and *Misc. Crocheted/Knitted Items*



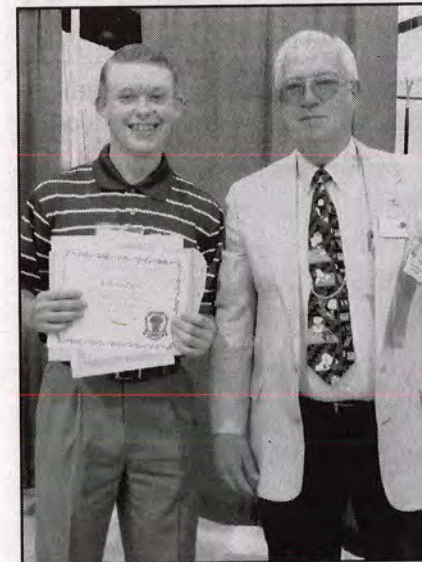


President of the Oregon State Grange  
Foundation

Spencer Creek Grange member Malcolm Trupp serves as president of the Board of the OSG Foundation. The Foundation is a 501c3 and handles the invested funds that are then given out as scholarships.

Below, Malcolm is pictured with Tony Papol, recipient of the 2018 Muzzy Mandel Scholarship.

## White Eagle Member Receives Scholarship from Foundation



*OSG Foundation President Malcolm Trupp presented Tony Papol with a certificate recognizing him as the "Muzzy" Mandel Scholarship recipient in 2015. He was selected again this year.*

Anthony 'Tony' Papol was selected as the 2018 Marcel "Muzzy" Mandel Scholarship winner by the Oregon State Grange Foundation. Tony and his father, Vincent "Vinnie" Papol, are members of White Eagle Grange #683. Tony is 2015 graduate of Pendleton High School and is a Astrophysics major at Brown University.

The Marcel "Muzzy" Mandel Scholarship was created with funds donated to the Oregon State Grange in memory of Mr. Mandel from the sale of the old Sherwood Grange Hall. Mr. Mandel, who served for many years as the Agriculture Chairman for the Washington-Yamhill Pomona Grange, gave very detailed reports, which are captured in their minutes during that period (mid-1980s-1990s).

STAPLES®



# Grange Connections Pep Rally and GrangeUp '17 Celebration!

Monday evening during State Grange convention found members gathered in the dining area to connect with each other, to celebrate the success of the GrangeUp '17 program and to pep up the crowd to push forward for another successful year.



The Program Development Team, Cookie Trupp, Jeannie Force and Annette Naylor ready to welcome all to the Pep Rally.

State Grange Master Susan Noah presented the top three Granges with the largest net gain for the 2017 year with plaques recognizing their achievement. First was New Bridge Grange #789 who more than doubled their membership with 105% gain. They went from 19 members to 39 members. Second was Siletz Valley Grange #558 with a net gain of 90%; going from 20 members to 38 members. Third was Salmon River Grange #516 with a net gain of 85%. They grew their Grange from 28 members to 52 members.

A special Master's Award was presented to Marys River Grange for the largest total net increase in members. They went from 43 members to 68 members; a net gain of 25 and have already set a goal for this year to get to 80 members which would make them one of the largest Granges in the state.

A special Thank You goes to the Program Development team, Jeannie Force, Cookie Trupp and Annette Naylor for organizing the evening.



Oregon State Grange ~ [www.orgrange.org](http://www.orgrange.org)



Monday evening's Grange Connects Pep Rally and celebration of a successful GrangeUp '17 program to pep up the crowd to push forward for another successful year.

STAPLES





American Values.  
Hometown Roots.

# Volunteer of the Year

## MALCOM TRUPP

In recognition of outstanding volunteerism, representing  
the Grange in your Community.

2  
0  
1  
8

*Eva Frost*

Eva Frost  
Oregon State Grange  
Community Service Director

STAPLES



## Member named "Volunteer of the Year" at State Grange

Oregon State Grange  
Community Service



### Volunteer of the Year Award

Entry for 2017

Grange Name: Spencer Creek # 855

County: Lane

After one nominee has been selected, write a short (750 words maximum) narrative on this form (or attach it to this form). Write the name, address, and phone number of the nominee and your Grange name on a separate sheet; place in a sealed envelope attached to the completed form. Entries will not be judged unless this form is properly signed with the envelope attached. Send it to the State Grange Community Service Director, postmarked no later than June 1.

Narrative describing nominee's volunteer service; (do not mention the nominee by name in this narrative)

See attached.

Master's Signature: Michael Galt  
Community Service Chairperson's Signature: Robert Trupp

Eva Frost  
Oregon State Grange  
Community Service Director  
PO Box 1453  
Scappoose, OR 97056  
503-816-8104  
evafrost1038@comcast.net

(Rev. 1/2017)



## Malcolm Trupp and OSG Community Service Chair Eva Frost

### Candidate for Volunteer of the year 2017 Community Service

Volunteering requires the generous sacrifice of one's time, energy and service without expecting anything in return. Two of the greatest characteristics of a true volunteer is their selflessness and generosity and it should not go unnoticed, and it does not at our Grange. Although our candidate is not a Volunteer from Tennessee, we will nevertheless refer to him as "Tennessee". "Tennessee" a reliable and committed giver of countless hours and energy and epitomizes what a volunteer truly is. His positive energy and enthusiastic attitude about any cause, is contagious and spreads to others. "Tennessee" makes you feel fantastic about your participation and with that positive spirit he motivates others to take effective action towards the cause as well.

"Tennessee" has many talents and is always willing to put them to effective use whether it be for his church, his Grange, or his community at large.

As a lifelong member of his church, "Tennessee" is capable and willing to step in to fill most any need that a situation calls for. "Tennessee" has many gifts and talents and is willing to share them when the need arises. Whether it be a plumbing problem, an electrical issue, or a sound system problem, "Tennessee" approaches it with pleasant, calm methodical scrutiny. On any given day, you can find "Tennessee" hauling gravel or bark with his dump truck, mowing or cutting up limbs with his chain saw – no task is too big or dirty to tackle for the benefit of anyone in need who may ask, or just need the help without asking. Within his community

Church, "Tennessee" has selflessly served as President, Treasurer, or just assisting the head usher. "Tennessee" has always considered these activities as an opportunity to serve and just "the right thing to do".

As a Granger for over 50 years, "Tennessee" has effectively and selflessly held most positions of a Subordinate Grange. Additionally, "Tennessee" volunteers' endless hours serving as an officer at the Pomona, State and Fraternal Society as well. "Tennessee" is just as happy to wash dishes and serve a meal as he is running a meeting or serving as a committee chair. You would be hard pressed not to find "Tennessee" at the Lane County Fair tirelessly and cheerfully doing everything and anything that needs doing – every day for a solid week from morning to night.

"Tennessee" volunteers without being asked and expects nothing in return. He truly is a generous giver of his time, spirit and positive energy and a joy to associate with. "Tennessee" is an amazing volunteer who thinks less about what he can get from the experience of volunteering and more about what he can contribute. Our Candidate places his Faith in God, nurtures Hope, selflessly dispenses Charity and is noted for Fidelity. Our Grange is proud and honored to nominate "Tennessee" as a worthy candidate for volunteer of the year for 2017.

Spencer Creek Grange #855 nominee:

Mr. Malcolm Trupp  
85495 Chezem Rd.  
Eugene, OR 97405  
541-686-0583



Entry in State Lecturer's Contest

The Program for the Candidates Forum was entered in the Lecturer's *Program* Contest at State Grange.

The Program placed 1st in the *Program* Category.

OREGON  
STATE  
GRANGE



1ST  
PLACE

Contest

Lecturer's Contest

Category

Program

Fold bottom up to here to cover name

Contestant's name

Cookie Trupp,

Michael Gaber, Jeanne Taylor

Address

85101 Chezem Rd

City

Eugene

Zip

97405

Email

jamiegaber@gmail.com

Phone



Grange member

Non-member

If non-member, name of sponsor

Grange name

855

Spencer Creek

#

County

Lane

All entries need to be picked up by noon on Thursday  
June 28.



Volunteering in the Log Cabin

Four SCG Members volunteered for several shifts hosting in the Log Cabin during the Oregon State Fair. Part of hosting in the Log Cabin was to greet visitors and to promote the Grange



The Trupp family of Spencer Creek Grange spent time in the Log Cabin meeting and greeting. Left to right: Michelle Croy, Courtney Croy, Cookie Trupp and Malcolm Trupp.

Thank you

those who volunteered for one, two or even twelve (in the role of ambassador Jessie Jo) shifts hosting in the Log Cabin, and promoting our organization.

- |                  |                     |                       |
|------------------|---------------------|-----------------------|
| Bill Dodds       | Emily Clute         | Ken Schwieger         |
| Bob Ludi         | Emily Melick        | Leila Dumolt          |
| Brenda Hoag      | Gary Beckly         | Lexie Suing           |
| Bud Dumolt       | Jacki Sanchez       | Liz Dehne             |
| Buzi Nelson      | Jacob Luttrell      | Loreen Huffman        |
| Carol Everman    | Jacy Turner         | Lyle Utt              |
| Carolyn Pettit   | Jay Sexton          | Maggie Swartzendruber |
| Celia Luttrell   | Jeanie Force        | Malcolm Trupp         |
| Christy Dumolt   | Jeff Dehne          | Margaret Clute        |
| Cody Dunsmuir    | Jeff Hoag           | Marilyn Reiher        |
| Connie Suing     | Jency Rosasco       | Peggy Jillson         |
| Cookie Trupp     | Jesse O'Dell        | Randi Crowe           |
| Courtney Croy    | Jessie Jo Guttridge | Ray Massingham        |
| Dan Keeley       | Jim Clute           | Riley Reynolds        |
| Dan LeBrun       | Jim Dumolt          | Roberta O'Dell        |
| Dan Suing        | Jim Dumolt II       | Sam Keator            |
| Darlene Stephens | JoAnn Keeley        | Sandi Ludi            |
| David McBride    | Joanne Cantrall     | Sandra Noah           |
| Don Furlan       | Joanne McBride      | Scot Jacobson         |
| Don Kingsborough | John DeHaas         | Sonny Hays-Eberts     |
| Don Sether       | Joyce Parker        | Sue Sether            |
| Ed Luttrell      | Judy Hays-Eberts    | Susan Noah            |
|                  | Julie Schnetzky     | Suzy Ramm             |
|                  | Justin Clute        | Teresa Cernac         |
|                  | Katrina Bowser      | Tim Dehne             |
|                  |                     | Tina Reynolds         |



Recognition of Community Service  
by Oregon State Grange

Wonderful  
Work!

Spencer  
NAME  
Creek  
2017 Yearbook  
EVENT

2018  
DATE  
Community  
Service  
JUDGE  
Committee



OREGON  
STATE  
GRANGE



2ND  
PLACE

Thank You for your  
Service and exceptional  
Help in Your Community.  
We appreciate all you've  
done and continue to  
do for those in need.

Community Service Chair  
and Committee



# Community Service Recognition

Presented to:  
Spencer Creek #855

Thank you for your commitment to your community, your Grange,  
and completing the 2017 annual community service yearbook.



*Eva Frost*  
Eva Frost  
Oregon State Grange  
Community Service Director



2146152



Member Elected  
Oregon State Grange Lecturer



Cookie Trupp was installed as Lecturer of the OSG

## LECTURER

### Cookie (LaMora) Trupp

Brothers and Sisters,



I am honored to be nominated for Lecturer of the OSG.

The Lecturer is to help educate members on a variety of timely topics. The experience I have acquired from holding offices on the Subordinate, Pomona and State level, and serving on committees on the Pomona, State, and National level, will help me develop programs that our members will relate to. Presently serving on the OSG Program and Development team has assisted me in keeping in touch with our growing membership needs and interests.

Thank you for the nomination. If I have the opportunity to serve, I will do so to the best of my ability.

Fraternally,

Cookie (LaMora) Trupp  
Spencer Creek Grange #855  
Eugene, Oregon  
Lane County

## Installation of State Officers



The Oregon State Officers elected for the 2018-20 term given their obligation by Installing Officer Jim Dumolt and led by Marshall Annette Naylor. L-r: Overseer - Jay Sexton, Lecturer - Cookie Trupp, Steward - Phil Van Buren, AS - Tim Dehne, LAS Maggie Swartzendruber, Chaplain - Peggy Fine, Treasurer - Paula Herrick, Secretary - Sarah Kingsborough, Gatekeeper - James Clute, Ceres Elizabeth - Liz Dehne, Pomona - Mikela Heimuller, Flora - Eva Frost, EC #1 - John M. Fine, EC #2 - Sam Keator and EC #3 - Louise Holst. R: Master Susan Noah.





2018 Spencer Creek Candidates Forum

Lane County Commissioner District 5

YOUR CANDIDATES ARE: (alphabetical order):

**James Barber** - Lives in Walterville. Real Estate Broker, LCC, no degree, Bus. Mgt.

**Heather Buch** - Lives SW of Eugene -Special Projects Broker, St Vincent's. BA, Seattle Univ. Business Admin.

**Tim Laue** - Lives in Blue River - Retired - BA, U of O Political Sci, History and Lit., M.Ed., U of O.

**Frank King** - Lives in Deerhorn. Speaker and Trainer, auctioneer, comedian. BS and BA, U of N. Carolina, Labor /Mgt. relations and Pol. Science.

**Kevin Matthews** - Lives in Dexter. Agricultural producer. BA, UC Santa Clara environmental studies; MA, UC Berkeley Architecture.

**Gary Williams** - Lives in Cottage Grove. Appointed Lane Co. Commissioner. Painting contractor, Mayor of CG. Attended San Jose Bible College, no degree.

(Above information was taken from the Candidate’s filing submitted to Lane County.)

A special thanks to the following for their help with this event:

Spencer Creek Grange Forum Committee: Jeanne Taylor, Glenn Harden, Mike Gaber. Grange Helpers/Members: Jamie Gaber, Malcolm Trupp, Cookie Trupp, Steve Taylor, Jan Messenger.

League of Women Voters: Kathy Madison, Linda Lynch, and Keli Osborn.

LIST OF POTENTIAL QUESTIONS TO THE CANDITATES:

- 1. Considering you will represent a primarily rural area of Lane County, what do you identify as the most critical issues facing this rural area and what do you plan to do about them?
- 2. One of the items on the docket for the next Lane County Board of Commissioners is redistricting. What criteria should guide the drawing of new Lane County Commissioner districts in 2021?
- 3. What should the Board of Commissioners do to improve response times by the Sheriff’s Office in rural and unincorporated areas of Lane County?
- 4. What specific land planning decision made by the County Commissioners in the last 3 years do you strongly support or oppose and why?
- 5. If elected to the Board of Commissioners, what strategies if any would you advocate to provide for more affordable housing?
- 6. What do you see as the role of Lane County Commissioners to maintain and improve air quality, water quality, waste management, and land use? What grade would you give the current Board in fulfilling that role?
- 7. Lane County seeks State funding for a portion of a proposed new County Courthouse. What portion of that project should Lane County residents bear? What’s your Plan B if the proposed land swap between Lane County and the City of Eugene falls through?
- 8. The federal spending bill includes funding for the Secure Rural Schools program for two years, which would aid Lane County and other rural counties affected by the decline in revenue from timber harvests on federal lands. What should be Lane County’s priorities for this funding?



# SPENCER CREEK GRANGE 2018 EVENTS CALENDAR

CHECK THE WEBSITE FOR UPDATES: [www.spencercreekgrange.org](http://www.spencercreekgrange.org)

• January:	13	10am	Host POMONA GRANGE
	16	7pm	MONTHLY BUSINESS MEETING
	23	6:30pm	POTLUCK and OPEN HOUSE
• February:	20	7pm	MONTHLY BUSINESS MEETING
• March:	20	7pm	MONTHLY BUSINESS MEETING
• April:	17	7pm	MONTHLY BUSINESS MEETING
	24	6:30pm	POTLUCK and OPEN HOUSE
	Tba		BARN DANCE
• May:	19	10am	ROAD CLEAN-UP
	15	7pm	MONTHLY BUSINESS MEETING
	26	10am-2pm	1st GROWER'S MARKET every Sat thru Sept 29th
• June:	19	7pm	MONTHLY BUSINESS MEETING
	22-28		145 <sup>th</sup> OREGON STATE GRANGE CONVENTION Astoria, OR
• July:	17	7pm	MONTHLY BUSINESS MEETING
	18-22		LANE COUNTY FAIR COME VISIT US!!
	24	6:30pm	POTLUCK & OPEN-HOUSE
• August:	18	3pm	HALL CLEAN-UP
	19	9am	VERRY BERRY PANCAKE BREAKFAST
	21	7pm	MONTHLY BUSINESS MEETING
	24		OREGON STATE FAIR (ends Sept 3rd)
• September:	16	12pm-4pm	34th ANNUAL CHICKEN BBQ
	18	7pm	MONTHLY BUSINESS MEETING
• October:	6	10am-3pm	HARVEST FESTIVAL
	16	7pm	MONTHLY BUSINESS MEETING
	26-27	7pm-10pm	HAUNTED HOUSE
• November:	3	9am-3pm	HOLIDAY BAZAAR
	13-17		152nd NATIONAL GRANGE CONVENTION
	20	7pm	MONTHLY BUSINESS MEETING
• December:	2	2pm	DRESS CHRISTMAS TREE & "GIFT" EXCHANGE
	3	7pm	CHRISTMAS PROGRAM & OPEN HOUSE
	18	7pm	MONTHLY BUSINESS MEETING

# Candidates Forum for Lane County Commissioner Position 5



**YOUR CHANCE TO  
MEET THE CANDIDATES**



*The Spencer Creek Grange and the League of Women Voters*  
Invites you to attend a  
*Candidates Forum and Reception*  
For the election May 6 for Lane County Commissioner for Position 5  
Also known as East Lane

- |                  |                |
|------------------|----------------|
| • Heather Buch   | • Frank King   |
| • Kevin Matthews | • James Barber |
| • Gary Williams  | • Tim Laue     |

*Tuesday, April 24, 7— 9 pm*  
*Spencer Creek Grange*  
*(corner of Lorane Highway & McBeth Road*  
[www.spencercreekgrange.org](http://www.spencercreekgrange.org)

**Light Refreshments will be served**

***The public is invited***

The Grange is a grassroots, non-partisan, non-sectarian, fraternal organization with its roots in agriculture and does not favor any candidate over the others.  
The League of Women Voters, nonpartisan political organization, encourages the informed and active participation of citizens in government.



Hosted Candidates Forum for  
Lane County Commissioner Position 5

Candidates Forum for  
Lane County Commissioner Position 5

**YOUR CHANCE TO  
MEET THE CANDIDATES**

The Spencer Creek Grange and the League of Women Voters  
Invites you to attend a  
**Candidates Forum and Reception**  
For the election May 6 for Lane County Commissioner for Position 5  
Also known as East Lane

- Heather Buch
- Kevin Matthews
- Gary Williams
- Frank King
- James Barber
- Tim Laue

Tuesday, April 24, 7-9 pm  
Spencer Creek Grange  
corner of Lorane Highway & McBeth Road  
www.spencercreekgrange.org

Light Refreshments will be served  
**The public is invited**

The Grange is a grassroots, non-partisan, non-sectarian, fraternal organization with its roots in agriculture and does not favor any candidate over the others.  
The League of Women Voters, nonpartisan political organization, encourages the informed and active participation of citizens in government.

Spencer Creek Grange presented a Candidates forum for Lane County Commissioner race for position 5 (East Lane) with the League of Women Voters of Lane County help. 6 Candidates were invited to participate in the forum which was held on Tuesday, April 24, 7-9 p.m. at the Grange.

2018 Spencer Creek Candidates Forum  
Lane County Commissioner District 5

**YOUR CANDIDATES ARE:** (alphabetical order):

**James Barber** - Lives in Waltherville. Real Estate Broker, LCC, no degree, Bus. Mgt.

**Heather Buch** - Lives SW of Eugene - Special Projects Broker, St Vincent's. BA, Seattle Univ. Business Admin.

**Tim Laue** - Lives in Blue River - Retired - BA, U of O Political Sci, History and Lit., M.Ed., U of O.

**Frank King** - Lives in Deerhorn. Speaker and Trainer, auctioneer, comedian. BS and BA, U of N. Carolina; Labor /Mgt. relations and Pol. Science.

**Kevin Matthews** - Lives in Dexter. Agricultural producer. BA, UC Santa Clara environmental studies; MA, UC Berkeley Architecture.

**Gary Williams** - Lives in Cottage Grove. Appointed Lane Co. Commissioner. Painting contractor, Mayor of CG. Attended San Jose Bible College, no degree.

(Above information was taken from the Candidate's filing submitted to Lane County.)

A special thanks to the following for their help with this event:  
Spencer Creek Grange Forum Committee: Jeanne Taylor, Ellen Harden, Mike Guber. Grange Helpers/Members: Jamie Guber, Malcolm Trupp, Cookie Trupp, Steve Taylor, Jan Messenger.  
League of Women Voters: Kathy Madison, Linda Lynch, and Kell Osborn.



Spencer Creek Grange member Jeanne Taylor, welcomed the community and introduced the Candidates. The people in the audience were given programs and 3X5 cards to write their questions on and were given to the moderator..

Questions From the audience

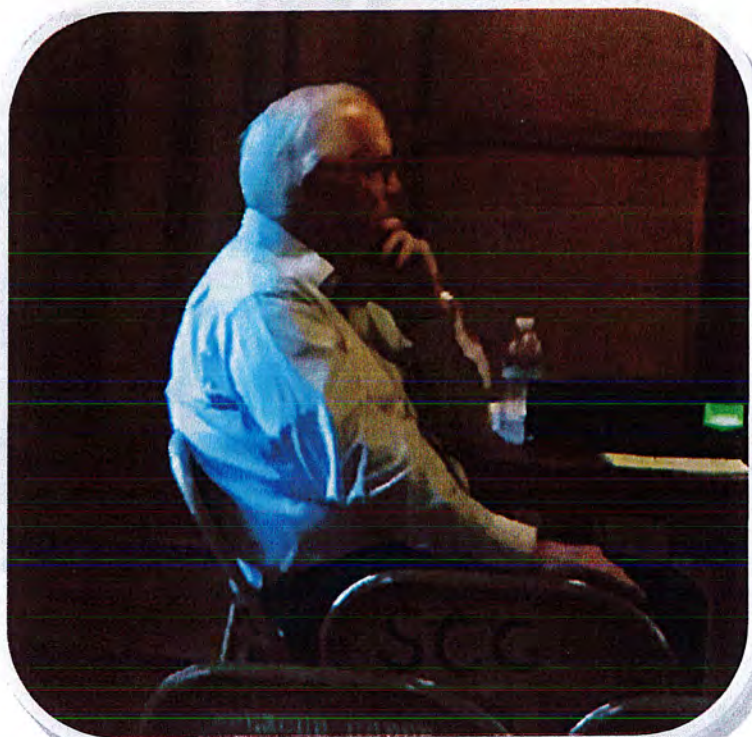
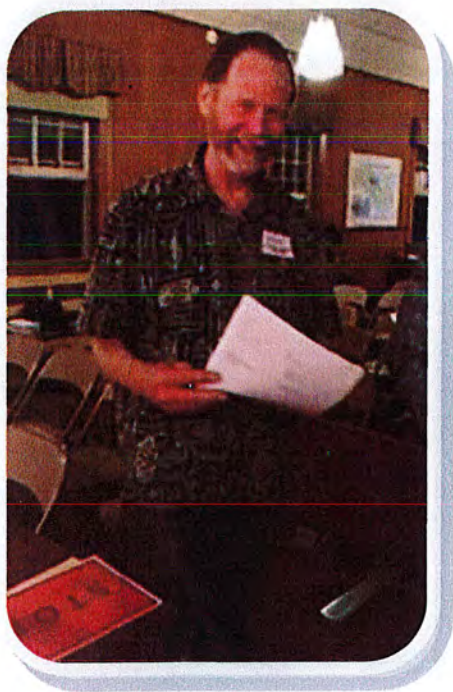
What issues do you think  
you all agree on? Where do  
you think you disagree?  
James Barber James Barber James Barber  
James Barber James Barber James Barber

How can the commissioners help  
help get rural folks internet  
service that is both fast & reasonably  
prices. Rural folks need internet  
for their businesses & their kids  
education

How would you vote for  
the ban on husbands  
regarding  
Yes - No - Undecided  
James Barber James Barber James Barber



SC member, Glenn Harden, served as time keeper. Glens' job was to guarantee everyone equal time to tell something about themselves, and to have equal time to answer questions presented by the moderator.



SC member ,Malcolm Trupp, ran the sound system. Our moderator, SC member, Mike Gaber, used a microphone so he could be heard clearly by everyone, and each participant had the ability to use a microphone when addressing the audience.

#### LIST OF POTENTIAL QUESTIONS TO THE CANDIDATES:

1. Considering you will represent a primarily rural area of Lane County, what do you identify as the most critical issues facing this rural area and what do you plan to do about them?
2. One of the items on the docket for the next Lane County Board of Commissioners is redistricting. What criteria should guide the drawing of new Lane County Commissioner districts in 2021?
3. What should the Board of Commissioners do to improve response times by the Sheriff's Office in rural and unincorporated areas of Lane County?
4. What specific land planning decision made by the County Commissioners in the last 3 years do you strongly support or oppose and why?
5. If elected to the Board of Commissioners, what strategies if any would you advocate to provide for more affordable housing?
6. What do you see as the role of Lane County Commissioners to maintain and improve air quality, water quality, waste management, and land use? What grade would you give the current Board in fulfilling that role?
7. Lane County seeks State funding for a portion of a proposed new County Courthouse. What portion of that project should Lane County residents bear? What's your Plan B if the proposed land swap between Lane County and the City of Eugene falls through?
8. The federal spending bill includes funding for the Secure Rural Schools program for two years, which would aid Lane County and other rural counties affected by the decline in revenue from timber harvests on federal lands. What should be Lane County's priorities for this funding?

On the inside of the program was listed questions that the candidates could be asked if there was time. The audience questions however took up the time allowed.





# HEATHER BUCH

for LANE COUNTY COMMISSIONER


*A New Perspective, A New Voice*

**ENDORSED BY\*:** Senator Lee Beyer, Representative Julie Fahey, Former Representative Val Hoyle, Former Senator Tony Corcoran, Creswell City Councilor Gary Mounce, Eugene City Councilor Chris Pryor, LCC Board Member Phil Carrasco, Terry McDonald, Jean Tate, AFSCME Local 2831, Eugene Police Employees Association, IBEW Local 280, Lane County CLC – AFLCIO, Lane County Building Trades Council, SEIU Local 503 & 49, Sierra Club, Joint Council of Teamsters #37, UFCW Local 555

\*For a complete list of current endorsements, visit HeatherBuch.com.



**EXPERIENCED LEADER • MOTHER • SMALL BUSINESS OWNER • MILITARY SPOUSE**

HeatherBuch.com • 541-623-0412 • ElectHeatherBuch@gmail.com •  @HeatherBuchLaneCounty



SPENCER CREEK GRANGE 2018  
EVENTS CALENDAR

CHECK THE WEBSITE FOR UPDATES: [www.spencercreekgrange.org](http://www.spencercreekgrange.org)

• January:	13	10am	Host POMONA GRANGE
	16	7pm	MONTHLY BUSINESS MEETING
	23	6:30pm	POTLUCK and OPEN HOUSE
• February:	20	7pm	MONTHLY BUSINESS MEETING
• March:	20	7pm	MONTHLY BUSINESS MEETING
• April:	17	7pm	MONTHLY BUSINESS MEETING
	24	6:30pm	POTLUCK and OPEN HOUSE
	Tba		BARN DANCE
• May:	19	10am	ROAD CLEAN-UP
	15	7pm	MONTHLY BUSINESS MEETING
	26	10am-2pm	1st GROWER'S MARKET every Sat thru Sept 29th
• June:	19	7pm	MONTHLY BUSINESS MEETING
	22-28		145 <sup>th</sup> OREGON STATE GRANGE CONVENTION Astoria, OR
• July:	17	7pm	MONTHLY BUSINESS MEETING
	18-22		LANE COUNTY FAIR COME VISIT US!!
	24	6:30pm	POTLUCK & OPEN-HOUSE
• August:	18	3pm	HALL CLEAN-UP
	19	9am	VERRY BERRY PANCAKE BREAKFAST
	21	7pm	MONTHLY BUSINESS MEETING
	24		OREGON STATE FAIR (ends Sept 3rd)
• September:	16	12pm-4pm	34th ANNUAL CHICKEN BBQ
	18	7pm	MONTHLY BUSINESS MEETING
• October:	6	10am-3pm	HARVEST FESTIVAL
	16	7pm	MONTHLY BUSINESS MEETING
	26-27	7pm-10pm	HAUNTED HOUSE
• November:	3	9am-3pm	HOLIDAY BAZAAR
	13-17		152nd NATIONAL GRANGE CONVENTION
	20	7pm	MONTHLY BUSINESS MEETING
• December:	2	2pm	DRESS CHRISTMAS TREE & "GIFT" EXCHANGE
	3	7pm	CHRISTMAS PROGRAM & OPEN HOUSE
	18	7pm	MONTHLY BUSINESS MEETING

Candidates Forum for  
Lane County Commissioner Position 5



**YOUR CHANCE TO  
MEET THE CANDIDATES**



*The Spencer Creek Grange and the League of Women Voters*  
Invites you to attend a

*Candidates Forum and Reception*

For the election May 6 for Lane County Commissioner for Position 5  
Also known as East Lane

- |                  |                |
|------------------|----------------|
| • Heather Buch   | • Frank King   |
| • Kevin Matthews | • James Barber |
| • Gary Williams  | • Tim Laue     |

*Tuesday, April 24, 7— 9 pm*  
*Spencer Creek Grange*  
*(corner of Lorane Highway & McBeth Road*  
[www.spencercreekgrange.org](http://www.spencercreekgrange.org)

**Light Refreshments will be served**

***The public is invited***

The Grange is a grassroots, non-partisan, non-sectarian, fraternal organization with its roots in agriculture and does not favor any candidate over the others.  
The League of Women Voters, nonpartisan political organization, encourages the informed and active participation of citizens in government.



2018 Spencer Creek Candidates Forum

Lane County Commissioner District 5

YOUR CANDIDATES ARE: (alphabetical order):

**James Barber** - Lives in Walterville. Real Estate Broker, LCC, no degree, Bus. Mgt.

**Heather Buch** - Lives SW of Eugene -Special Projects Broker, St Vincent's. BA, Seattle Univ. Business Admin.

**Tim Laue** - Lives in Blue River - Retired - BA, U of O Political Sci, History and Lit., M.Ed., U of O.

**Frank King** - Lives in Deerhorn. Speaker and Trainer, auctioneer, comedian. BS and BA, U of N. Carolina, Labor /Mgt. relations and Pol. Science.

**Kevin Matthews** - Lives in Dexter. Agricultural producer. BA, UC Santa Clara environmental studies; MA, UC Berkeley Architecture.

**Gary Williams** - Lives in Cottage Grove. Appointed Lane Co. Commissioner. Painting contractor, Mayor of CG. Attended San Jose Bible College, no degree.

(Above information was taken from the Candidate’s filing submitted to Lane County.)

A special thanks to the following for their help with this event:

Spencer Creek Grange Forum Committee: Jeanne Taylor, Glenn Harden, Mike Gaber. Grange Helpers/Members: Jamie Gaber, Malcolm Trupp, Cookie Trupp, Steve Taylor, Jan Messenger.

League of Women Voters: Kathy Madison, Linda Lynch, and Keli Osborn.

LIST OF POTENTIAL QUESTIONS TO THE CANDITATES:

1. Considering you will represent a primarily rural area of Lane County, what do you identify as the most critical issues facing this rural area and what do you plan to do about them?
2. One of the items on the docket for the next Lane County Board of Commissioners is redistricting. What criteria should guide the drawing of new Lane County Commissioner districts in 2021?
3. What should the Board of Commissioners do to improve response times by the Sheriff’s Office in rural and unincorporated areas of Lane County?
4. What specific land planning decision made by the County Commissioners in the last 3 years do you strongly support or oppose and why?
5. If elected to the Board of Commissioners, what strategies if any would you advocate to provide for more affordable housing?
6. What do you see as the role of Lane County Commissioners to maintain and improve air quality, water quality, waste management, and land use? What grade would you give the current Board in fulfilling that role?
7. Lane County seeks State funding for a portion of a proposed new County Courthouse. What portion of that project should Lane County residents bear? What’s your Plan B if the proposed land swap between Lane County and the City of Eugene falls through?
8. The federal spending bill includes funding for the Secure Rural Schools program for two years, which would aid Lane County and other rural counties affected by the decline in revenue from timber harvests on federal lands. What should be Lane County’s priorities for this funding?



# Questions From the audience

What issues do you think  
you all agree on? Where do  
you think you disagree?

James	Heather	James S
Kevin	James (9)	Kevin F

How can the commissioners <sup>Tim S</sup>~~Heather~~  
help get rural folks internet (5)  
service that is both fast + reasonably  
priced. Rural folks need internet  
for their businesses + their kids  
education

How would you vote for  
the ban on herbicide  
spraying.  
Yes - No - Undecided

Start 8:05	Kevin S
	Tim F

(6)



## Candidates Forum for Lane County Commissioner Position 5



YOUR CHANCE  
MEET THE CANDIDATES

*The Spencer Creek Grange and the  
invites you to:  
Candidates Forum  
For the election May 6 for Lane County  
Also known as E*

- Heather Buch
- Kevin Matthews
- Gary Williams

*Tuesday, April 24  
Spencer Creek  
(corner of Lorane Highway)  
www.spencercreek*

**Light Refreshments**

**The public is**

The Grange is a grassroots, non-partisan, non-sectarian, fraternal organization that promotes agriculture and does not favor any candidate over the others.  
The League of Women Voters, nonpartisan political organization that promotes participation of citizens in government.

### 2018 Spencer Creek Candidates Forum

Lane County Commissioner District 5

#### YOUR CANDIDATES ARE: (alphabetical order):

**James Barber** - Lives in Walterville. Real Estate Broker, LCC, no degree, Bus. Mgt.

**Heather Buch** - Lives SW of Eugene -Special Projects Broker, St Vincent's. BA, Seattle Univ. Business Admin.

**Tim Laue** - Lives in Blue River - Retired - BA, U of O Political Sci, History and Lit., M.Ed., U of O.

**Frank King** - Lives in Deerhorn. Speaker and Trainer, auctioneer, comedian. BS and BA, U of N. Carolina, Labor /Mgt. relations and Pol. Science.

**Kevin Matthews** - Lives in Dexter. Agricultural producer. BA, UC Santa Clara environmental studies; MA, UC Berkeley Architecture.

**Gary Williams** - Lives in Cottage Grove. Appointed Lane Co. Commissioner. Painting contractor, Mayor of CG. Attended San Jose Bible College, no degree.

(Above information was taken from the Candidate's filing submitted to Lane County.)

#### A special thanks to the following for their help with this event:

Spencer Creek Grange Forum Committee: Jeanne Taylor, Glenn Harden, Mike Gaber. Grange Helpers/Members: Jamie Gaber, Malcolm Trupp, Cookie Trupp, Steve Taylor, Jan Messenger.

League of Women Voters: Kathy Madison, Linda Lynch, and Keli Osborn.



**Recycling Day at the Spencer Creek Grange:**

**Sept 29th -- 10 am to 2 pm**

On September 29th 2018, the Spencer Creek Growers Market at the Spencer Creek Grange organized a convenient, local drop-off collection point one day ahead of the [Lane County Waste Management's First Free Plastics Roundup Event](#). Collection bins marked for three categories of plastic (#2, #4, #5) were made available and two Lane County volunteers from the Master Recycling Program were on hand to assist the public in identification and sorting. The day following the event, all of the collected plastic was taken to the Glenwood Transfer Station by another volunteer. From there it was subsequently transported to Denton Plastics in Portland, one of the few remaining companies that accept recycled plastic. The collected plastic is turned into park benches, decking, flower pots, electronic components and other items.

In addition to the public recycling event taking place that day, the market at the Spencer Creek Grange had 14 produce and craft vendors, an outdoor restaurant serving an all-local lunch and live acoustic music.





## 4-H Cloverbuds



Member Stephanie Schiffgens, 4-H Cloverbuds leader, meets at the Grange once a month along with several other 4-H groups. Stephanie works with young 5 & 6 year old children. Cloverbud members may raise small animals such as rabbits, cavies, cats, small dogs, chickens, and mini-goats. Stephanie's group raises rabbits and enjoys bringing their "projects" to the monthly meeting to learn to show and tell about their pet.



START





The 4-H Cloverbuds and the 4-H groups that meet at the Grange wanted to take on some projects that would benefit the Grange. Planting flowers in flower boxes was their first project. The flower boxes are attached to the railing on the front porch of the building. They have been a nice addition and beautifies the Grange.

As a result of SC Grange sponsoring these 4-H groups, we have gained 2 more new members.



STAPLES



SECTION SIX:

---

*Grange*

*Open House*

STAPLES®



## Grange Open House



Sheldon Irish Dublin Aires



Churchill Downey Street Singers



Community Service Chair Cookie Trupp, presented \$100 to each of the school directors to go toward their travel



Jamie Gaber and Katy O'Sullivan placing cookies in serving trays. During refreshment time, everyone helps themselves to cookies, punch & Coffee.



The visiting coral groups and their friends and family have a great time visiting with everyone. A good way to end a fun evening!



21/12/21





We celebrated another successful Grange with an evening open house and program on Monday, December 3rd. We scheduled the Program/ Open House in December so we can present to the public a review of our own Grange's events and accomplishments for the past year. We invited two youth choirs from local High Schools to be a part of our program therefor many of the approximate 100 guests who filled our hall were young and interested in our Grange and it's purpose in the community.

Our program was opened by a welcoming from our Master/President Mike Gaber. Cookie Trupp, Community Service Chair, then spoke about Spencer Creek's outreach and all of the people & organizations that we assist through our community service projects, how we raise our funds and thanked every one for their continued support through the year. This personal touch was very affective and people commented during refreshments how much they enjoyed the presentations. Through our presentation we were also able to convey to the younger generation the value and importance of giving back to the community.

The evening was designed to present information about Spencer Creek Grange in the best entertaining way so the public would leave with an up to date impression of our organization. Following our presentation about the Grange, the two choral groups sang. Each group of singers had brought with them family members and friends which added to our audience of community neighbors and friends of the Grange.. This program lasted a little over an hour and provided great exposure for our Grange to several dozen youth age students as well as to many adults in our Eugene area. The members of our community and beyond anticipate this evening and look forward to attending.

The program was then followed with social time, cookies, punch, and coffee. This format provided an entertaining informative evening for our guests and Grange community.

STAPLES



SECTION SEVEN:

---

**Grange**  
**Community Service**  
**Report**

STAPLES®



Oregon State Grange  
Community Service

Annual Report Form



Please keep a copy for your records.

Send to the Community Service Director postmarked no later than **June 1**. Include a copy in your yearbook, which must be entered at the State Grange Convention by **noon** on **June 24**.

Date Report Completed February 14, 2019

Grange Name Spencer Creek Grange Grange No. 855

City Eugene County Lane

Chairperson's Name Cookie Trupp

Chairperson's Address 85495 Chezem Road

City/State/Zip Code Eugene, OR 97405

Telephone # 541-517-4031 E-mail Address truppcookie@aol.com

Master's Name Mike Gaber

Signature of Community Service Chairperson *Cookie Trupp*

Will you be submitting a yearbook for judging at State Convention? Yes ☒ No ☐

Be sure to record the total the number of Grange members and non-Grange members who participate and the number of hours worked by each group. You may want to print the Community Service Volunteer Log form (downloadable from the Community Service page of the State Grange website), make copies, and distribute them to your members to record their volunteer hours each month.

STAPLES



Community Service Project Detail

Report period is January 1 through December 31 of last year

Brief description of projects	# of members participating	Member hours	# of non-members participating	Non-member hours
Donating clothing & household good to Goodwill, St Vincent dePaul, Eugene Mission	35	70	10	25
Recycled Newspapers, bottles & glass, plastics	54	225	58	120
3 Barn Dances Fridays 7-10 95v average attendents	20	130	8	40
Adopt-A-Road Project Saturday 10-12	12	48	5	20
Growers Market & Harvest Festival Saturdays from May-October	21	120	8	68
Lane County Fair Display, patrolling, PR work	12	130	4	20
Very Berry Pancake Breakfast Sunday 9am-12 served 204	15	87	15	44
Chicken BBQ Sunday 12-4 served 169 dinners	17	120	5	24
Holiday Bazaar Saturday 9-3, 15 tables rented to vendors served chili & cornbread lunch-donations	7	21	30	180
Open House/Program Monday 7-9 110 attended	15	36	5	10
Diseased tree removal and clean-up 6 trees cut down, branches chipped hauled off logs for future use	9	55	3	24
Plastics Recycling Day Free plastic roundup for #2, #4, #5 containers	2	8	3	24
Candidates Forum	6	48	2	4

If you had more projects, list them on a separate sheet.



Fundraising for Community Service Projects

Describe any fundraisers you held to support the project(s):  
a) Very Berry Pancake Breakfast-12th annual breakfast featuring local products. Serve 9-12. Pancakes topped with berry sauce & whipped cream. Donation jars on tables. Serve over 200 guests. Grossed over \$1000.00.  
b) Chicken BBQ-34th annual serving chicken, coleslaw, baked beans, fruit crisp desserts. Served 12-4 and also provide to-go boxes. Grossed \$1,177.00

Publicity for Community Service Projects

How did you inform your local community that you were doing the project(s)?  
1) Made ample use of lit reader board on side of the building. 2) Hand painted signs, usually 3 per event placed at prominent intersections. 3) Information sent to local papers and Grange Bulletin. 4) Computer generated fliers and posters. 5) Posted on ou SCG website...www.spencercreekgrange.org and scg facebook page. 6) Grange and community email list. 7) Radio spots and TV Community calendar.

Benefit to the Local Community

Explain the reason for the project(s) and the outcome or impact on your community.  
a) Fundas from the Berry Pancake Breakfast partially donated to Positive Community Ktichen,a local non-profit organization that provides healthy whole food meals to cancer patients, PinkSox Ryn/Walk Fundraiser to help women financilly durring cancer treatments.  
b) Funds from Chicken BBQ supports donations to Kind Tree-Autism Rocks, Dogs for Better Lives, Sheldon High Schoo Singers, Churchill High School singers, Lane Special Ed School, & gifts for Senior Adults.

Summary of Community Service Projects

Report period is January 1 through December 31 of last year

Number of Grange members: .....	+	60
Number of Grange members involved with project(s): .....	+	54
Total hours by Grange members:.....	=	1,098.00
Number of community citizens who helped with project(s): .....	+	58
Total hours given by community members: .....	=	603

Liz Dehne  
Oregon State Grange  
Community Service Director  
40370 Deerhorn Rd.  
Springfield, OR 97478  
541-746-9974  
dehneej@msn.com